



ATELIER VALS
ELEMENTS

ELEMENTS

ATELIERVALS.DESIGN



ATELIER VALS

GATHERING

GATHERING

ATELIERVALS.DESIGN

LAAX

DINING TABLE

120in x 40in x 30in

Hand selected reclaimed
timber legs + Vals Stone top

Option: stainless steel
imagination trough

*Offered in 120in, 144in,
168in, 192in*

Offered in TZ or NV finish



141150014 NV
281300042 TZ

Shown in Onyx Vals Stone with NV finish

GATHERING



Shown in Glacier Vals Stone with NV finish

20925046 NV
651225016 TZ

BREGENZ

DINING TABLE

144in x 45in x 30in

Vals Stone base + top

Option: stainless steel
imagination trough

*Offered in: 120in, 144in,
168in*

*Offered in TZ or NV
finish*

BELLINZONA

DINING TABLE ROUND

84in diameter x 30in

Hand selected
reclaimed timber
base + Vals Stone top

*Offered in TZ or NV
finish*



Shown in Soft Gray Vals Stone with TZ finish

231162560 TZ
241012540 NV



Shown in Soft Gray Vals Stone with NV finish

211600012 NV

LORRAINE

DINING TABLE

108in x 38in x 30in

Marine grade stainless steel legs +
Vals Stone top

Option: stainless steel imagination
trough

Offered in: 108in, 120in, 144in
Bar height option: 42in

Offered in NV finish

DAVOS

DINING TABLE

120in x 44in x 30in

Vals Stone top + base

Option: stainless steel
imagination trough

Offered in NV finish



14920021 NV

Shown in Alps White Vals Stone with NV finish

GATHERING



Shown in Alps White Vals Stone with NV finish

331312576 NV

ZUG

DINING TABLE

169in x 48in x 30in

Angled hand selected
reclaimed timber base +
Vals Stone top

*Only offered in 169in x
48in*

Offered in NV finish

ZURICH

DINING TABLE

120in x 40in x 30in

Hand selected
reclaimed timber
base + Vals Stone top

Option: Stainless
steel imagination
trough

*Offered in: 120in,
144in, 168in*

*Offered in TZ or NV
finish*



Shown in Alps White Vals Stone with NV finish

231050087 NV
481200037 TZ



Shown in Alps White Vals Stone with NV finish

341125078 NV

LUGANO

DINING TABLE

120in x 42in x 30in

Hand selected reclaimed
timber legs + stainless
steel inlay + Vals Stone
segmented top

Offered in NV finish

*This table can easily be
dismantled, moved and
relocated based on our
unique design*

LAVAUX

ROUND DINING TABLE

84in diameter x 30in tall x 2 1/2in thick table top

(3) 18in spheres Vals Stone between table top and 47 1/4in round beveled base

Offered in NV finish



14875032 NV

Shown in Soft Gray Vals Stone with NV finish

GATHERING



Shown in Alps White Vals Stone with NV finish 151125032 NV

LAVAUX

RECTANGLE DINING TABLE

156in x 48in x 30in

Beveled and bowed table top - all 4 sides

Vals Stone top + (4) 18in spheres between table top and rectangle beveled bases at 40in x 24in x 8in tall

Only offered in: 156in

Offered in NV finish

VALS

DINING TABLE

120in x 42in x 30in

Hand selected reclaimed timber
base + Vals Stone top

Option: stainless steel
imagination trough

Hand-forged solid steel strut

Offered in: 120in, 144in, 168in

Offered in NV finish



431250012 NV

Shown in Alps White Vals Stone with NV finish



Shown in Alps White Vals Stone with TZ finish

14795024 NV
17950012 TZ

LAUREZ

DINING TABLE

60in diameter x 30in

Marine grade stainless
steel + Vals Stone base
and top

Offered in TZ or NV finish

BASEL

DINING TABLE

147in x 54in at the widest point
30in tall x 3 1/2in thick table top

Beveled + bowed top - all 4
sides

Vals Stone base consists of 6
individual legs to create base

Only offered in 144in x 48in

Offered in NV finish



341050014 NV

Shown in Alps White Vals Stone with NV finish



141600043 TZ

Shown in Soft Gray Vals Stone with TZ finish

CARONA

DINING TABLE

146.5in x 41 3/4in x
30in

Table top is 2 3/4in
thick

Vals Stone top with a
marine grade
stainless steel base

A photograph of an outdoor lounge set in a wooded area. The set includes two modern, dark grey armchairs with light grey cushions and a large, round, light-colored stone fire pit in the center. The background is filled with trees with autumn foliage in shades of yellow, orange, and brown. The scene is captured in a soft, natural light.

ATELIER VALS

LOUNGE

LOUNGE



Shown in Wheat Vals Stone with NV finish

14875026 NV

LAAX

LOUNGE TABLE

60in x 60in x 14in

Hand selected reclaimed
timber base + Vals Stone
top

*Recommended for an
interior space or covered
outdoor area*

Offered in NV finish

VAUD

LOUNGE TABLE

60in x 36in in x 14in

Hand selected reclaimed
timber base + Vals
Stone top

*Recommended for an
interior space or covered
outdoor area*

*Offered in TZ or NV
finish*



85420064 TZ
86385071 NV

Shown in Soft Gray Vals Stone with TZ finish

LOUNGE

MEILEN

LOUNGE TABLE

60in x 60in x 14in

Vals Stone top +
marine grade
stainless steel base
(2 pieces)

*Offered in TZ or NV
finish*



14925022 TZ
15650031 NV

Shown in Onyx Vals Stone with TZ finish

VERBANIA

LOUNGE TABLE

60in x 36in x 14in

Vals Stone top + marine
grade stainless steel
base

Offered in TZ finish only



14720027 TZ

Shown in Soft Gray Vals Stone with TZ finish



Shown in Soft Gray Vals Stone with TZ finish

12900024 TZ
13750031 NV

LUINO

LOUNGE TABLE

58 3/4in x 41in x
12in

Solid Vals Stone

Biomorphic shape

*Offered in TZ or NV
finish*

LOUNGE

A modern outdoor patio area featuring a large, light-colored concrete fire pit with a fire burning inside. The fire pit is surrounded by a wooden deck and a large, L-shaped lounge sofa with white cushions and several patterned throw pillows. To the right of the fire pit is a swimming pool. In the background, there is a brick building with large glass windows and doors, and a raised garden bed with tall grasses and various flowers. The overall scene is bright and inviting, suggesting a high-quality outdoor living space.

ATELIER VALS

FIRE

FIRE

ZERMATT

FIRE FEATURE

24in diameter x 22 1/2in

2 1/2in Vals stone round base for air flow access

18 1/2in Vals Stone round fire basin

1 1/2in Vals stone top lid

Rolled lava stone and burner included:

18in flat round SS pan and 12in Penta burner NG

Electric ignition with remote



84395043 NV



Shown in Soft Gray Vals Stone with NV finish

BERN

SQUARE FIRE FEATURE

42in x 42in x 14 1/2in

Rolled lava stone and
burner included:

24in stainless steel pan,
electric ignition



86868819 TZ
72650012 NV

Shown in Onyx Vals Stone with TZ finish



*Shown in Soft Gray Vals Stone
with Onyx TZ finish accents*

NV with accents 851150026
NV only 921020032

BERN

RECTANGLE FIRE FEATURE

108in x 25in x 16in

Includes linear stainless-steel burner, pan, electric ignition and rolled lava stone for finished burn surface

Option: TZ finished accents

AROSA

FIRE FEATURE

50in diameter x 18in
(47in diameter without
border)

24in inside diameter

13in x 2in thick coping

Stainless steel burner pan
included, electric ignition,
rolled lava stone for
finished burn surface

Offered in TZ or NV finish



82668815 NV
41875012 TZ

Shown in Wheat Vals Stone with NV finish



Shown in Onyx Vals Stone with NV gloss finish

841050037 NV

TICINO

FIRE FEATURE

66.5in diameter x 16in
36in inside diameter

Stainless-steel burner pan, electric
ignition and rolled lava stone for finished
burn surface

Offered in NV finish only

8 piece unit with interior cable system
assembly

Requires mason to mortar set and grout

EZE

FIRE BOWL

42in diameter x 16in tall with 2
1/2in thick wall

Includes stainless steel burner
pan, electric ignition with rolled
lava stone for finished burn
surface

Offered in NV finish



97475024 NV

Shown in our Vals Gray with NV finish



*Shown in premium color,
Kiawah green Vals Stone NV finish*

43475044 NV 36in
43525042 NV 42in

SION

FIRE BOWL

Size offerings:
36in diameter or
42in diameter
2in wall

Includes stainless steel
burner pan, electric
ignition with rolled lava
stone for finished burn
surface

Offered in NV finish



ATELIER VALS

OTHER ELEMENTS

OTHER ELEMENTS

GENEVA

PLANTER

36in x 27in

4in base x 3in walls

Offered in: 36in, 30in, 24in,

Offered in NV finish

Includes drainage system



15120047 NV

*Shown in Glacier Vals Stone with NV finish
accented TZ border*

OTHER ELEMENTS

SION

PLANTER

Sizes offerings:
36in diameter or 42in
diameter
2in wall thickness

Includes drainage system



14125044 NV 36in
14195044 NV 42in

*Shown in premium color,
Kiawah green Vals Stone NV finish*



*Shown in premium color, Kiawah green Vals
Stone with NV finish*

1492562 NV

EZE

PLANTER

42in diameter x 12in

Custom sizes available
upon request

Offered in NV finish

Includes drainage
system

OTHER ELEMENTS

ZURICH

BAR

96in x 30in x 42in

Vals Stone top + hand
selected reclaimed timber
base

Offered in NV finish



84720083 NV

Shown in Onyx Vals Stone with NV finish



Shown in Onyx Vals Stone with Kincho
Grill <https://kinchogrills.com>

CHILE

GRILL

Custom size

Offered in NV finish

OTHER ELEMENTS

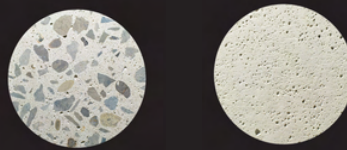
TRADITIONAL VALS STONE COLORS



PREMIUM VALS STONE COLORS



VALS STONE FINISHES



TERRAZZO

NV



KRISTIN HART WILLARD - ELEMENTS

@ATELIERVALS

KRISTIN@ATELIERVALS.DESIGN