



ATELIER VALS

SWISS INSPIRED. KENTUCKY MADE.



ABOUT ATELIER VALS

Swiss inspired. Kentucky made.

We are a studio that specializes in the aesthetics of concrete.

Our distinctive Vals Stone furnishings, pavers, and outdoor elements are handcrafted with a passion and meticulous attention to detail that creates beautiful spaces.

Vals Stone furnishings and tiles are composed of the finest aggregates, portland cement, and white silica sand. Every piece is handcrafted in a climate-controlled environment within the Louisville Mega Caverns to create a consistent and durable product that is easy to install across specific applications. Our non-slip, heat and freeze/thaw resistant products endure timelessly as patios, pools, porches, walkways, and more.



"Visiting the Therme Vals and observing the interaction of the elements—stone, concrete, light, and water—was inspirational and has served to guide my vision in establishing Atelier Vals.

With over 40 years in the hardscape industry, I set out to do things differently—to collaborate with the people and projects who appreciate a higher level of detail; who have an expectation of direct, personal attention throughout the construction process; and who demand a product of the highest quality."

*—Todd Hart
Founder and Creative Director*



WHY ATELIER VALS

Our Founder and Creative Director, Todd Hart, first immersed himself in the intricacies of Swiss craftsmanship during his visits to Switzerland.

Captivated by the Swiss commitment to precision and detail, his transformative experience at the Thermal Spa in Vals ignited a profound desire to establish a company that operated outside conventional norms. At that juncture, Todd was unaware of Peter Zumthor's accolades, such as winning the Pritzker and Royal Gold Medal for the spa; all he knew was that he had encountered something remarkably beautiful and intricately detailed in its simplicity.

As Todd delved into the works of Zumthor, he found increasing inspiration in the level of detail that characterized the renowned architect's creations. Growing up on a farm in rural Kentucky had given Todd a limited exposure to such architectural and design excellence. Possessing an inherent sense of form, he now aspired to a new standard, sparked by the awe-inspiring experiences in Switzerland. The birth of Atelier Vals marks the culmination of Todd's journey through trials and tribulations, always striving to reach the next echelon of perfection.



The culture of our team is founded on several guiding principles:

1. Details Matter.
2. How we do anything is how we do everything.
3. Can we make it better?

Our guiding principles, known as the "AV Way," are woven into our daily discussions and actions.

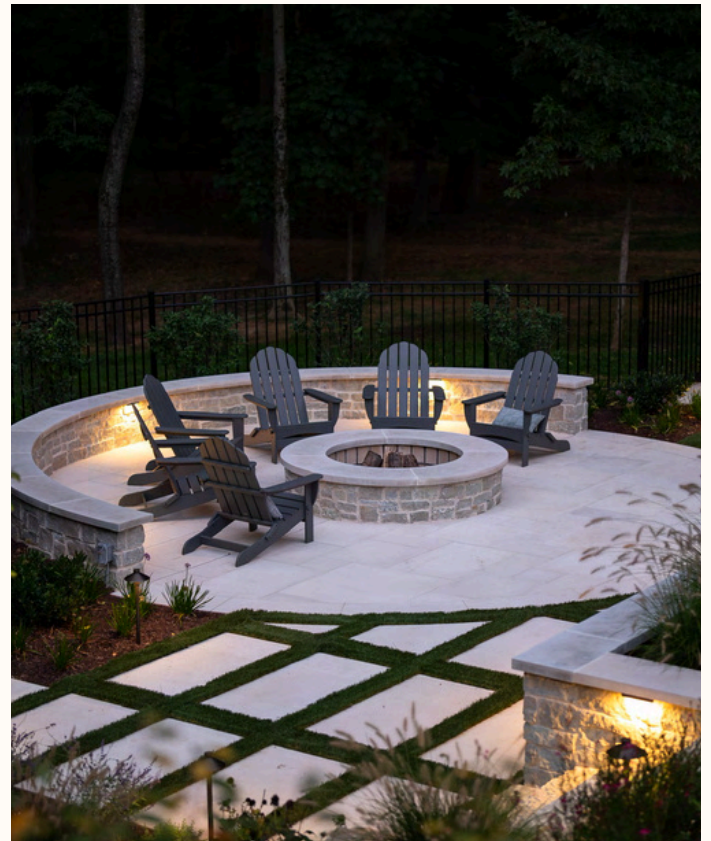
We appreciate your consideration and eagerly anticipate the opportunity to collaborate with you on your next project. Thank you for considering Atelier Vals.

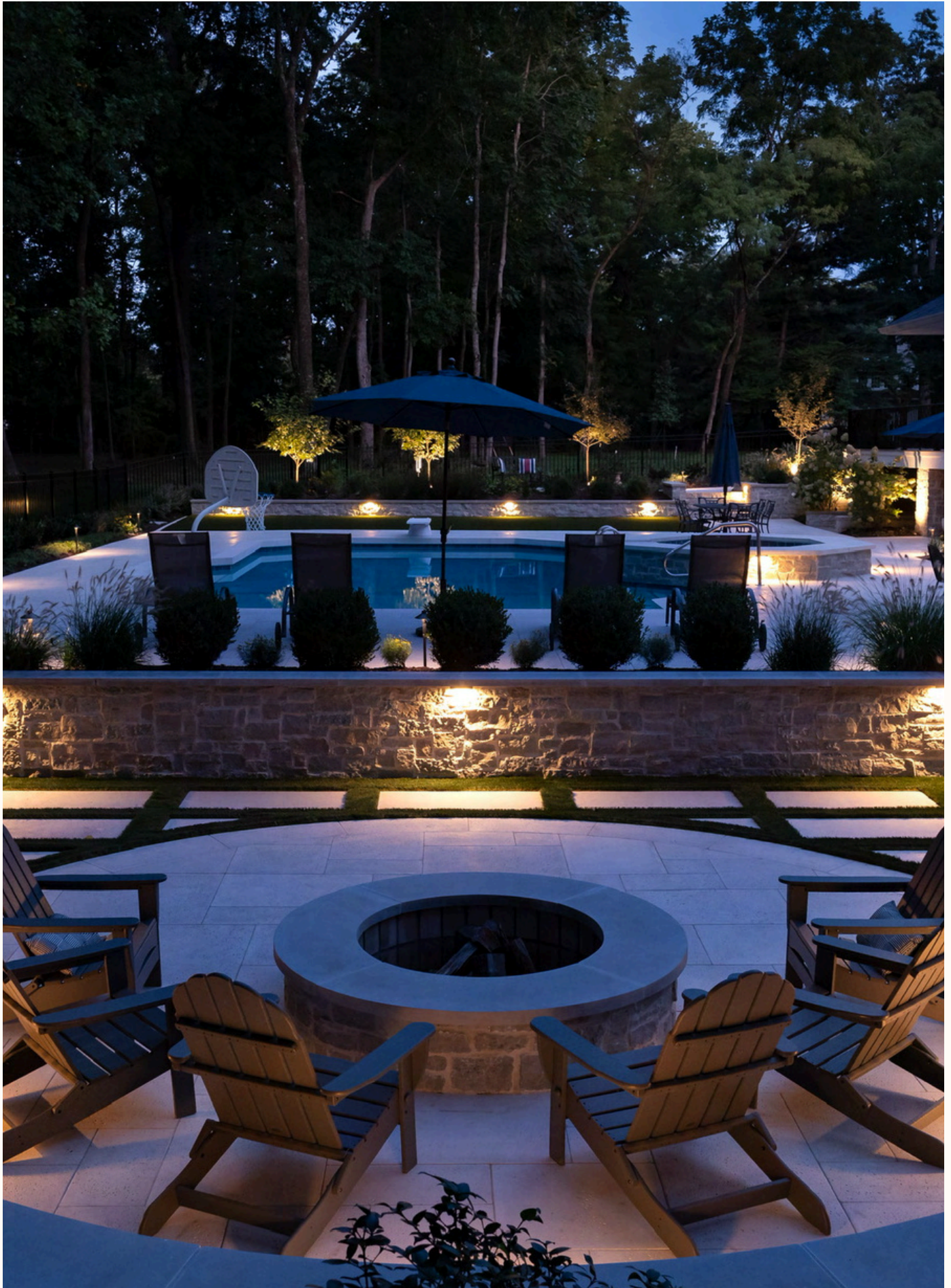


LOUISVILLE, KY

Vals Stone 5 piece random pattern
pool terrace and fire feature
hardscape

Color: Alps White
Finish: NV







ST JOSEPH, MO

Vals Stone custom retaining walls and solid steps with custom light niche

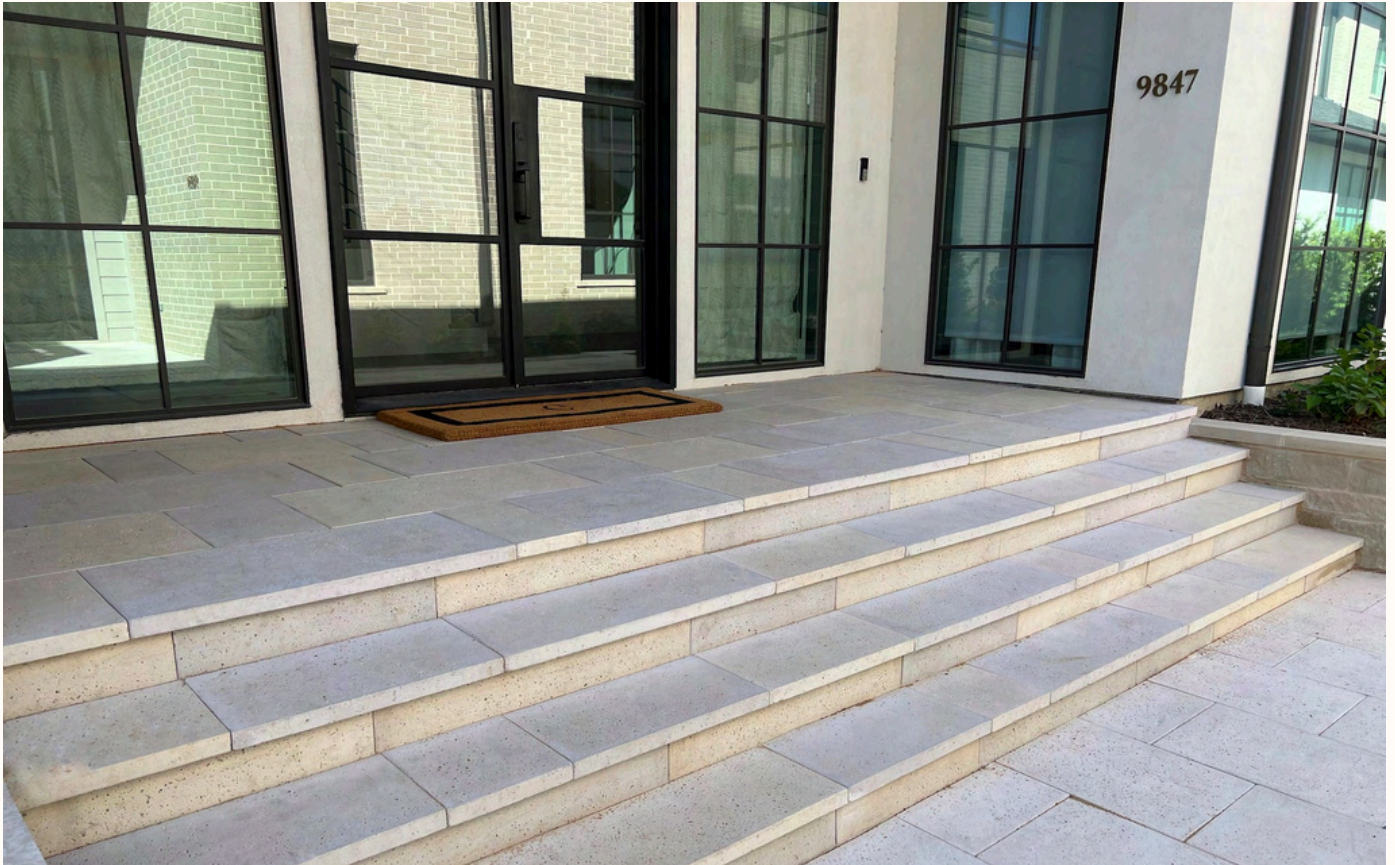
Vals Stone pool terrace and coping showcasing a custom fire feature

Color: Wheat

Finish: NV







DALLAS, TX

Vals Stone random pattern sidewalk and patio with steps

Color: Alps White and Soft Gray blend
Finish: NV





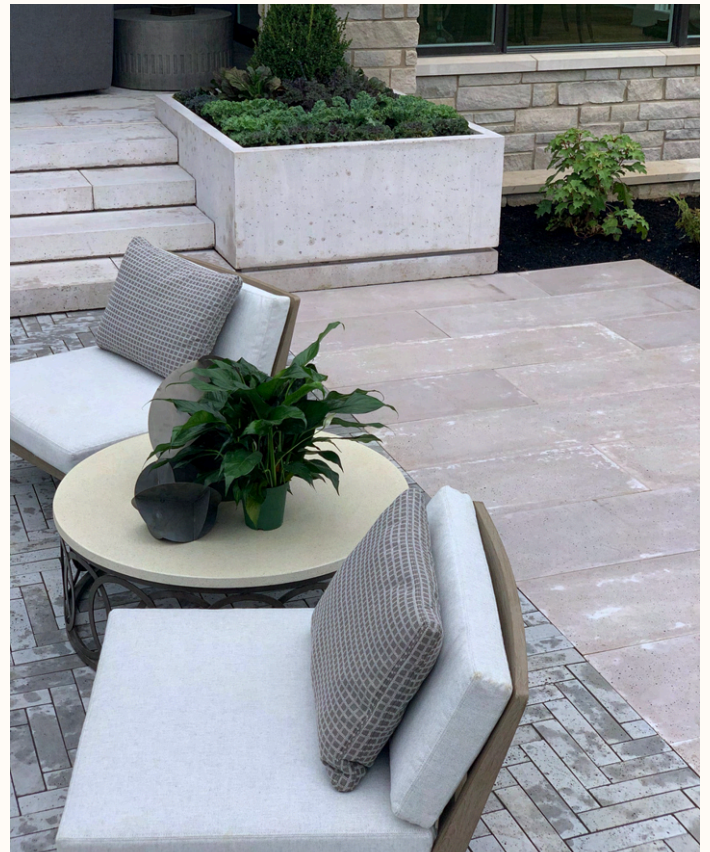


ZIONSVILLE, IN

Vals Stone 12" x 3" x 3" Herringbone pattern in soft gray paired with standard size 18" x 64" x 2 1/2" glacier bordering pavers and solid steps

The elements featured in this landscape are custom Vals Stone planters and the Bern fire feature

Color: Soft Gray and Glacier
Finish: NV





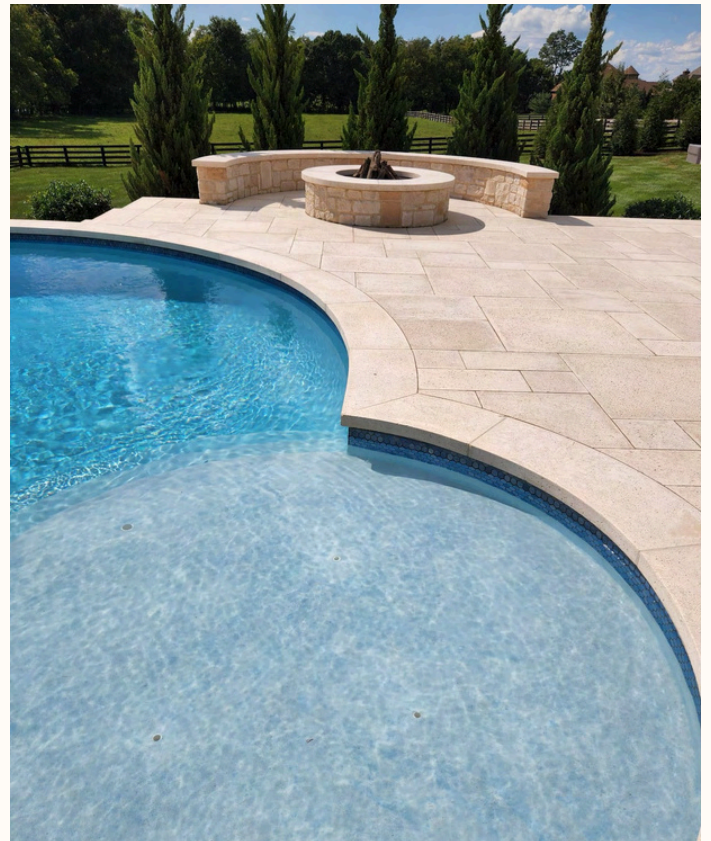


LEXINGTON, KY

Vals Stone pool with custom radius pool coping developed by using customer provided templates

Project includes custom wall and fire feature coping

Color: Wheat
Finish: NV







PINEHURST, NC

Vals Stone custom solid steps,
separated with traditional poured
concrete

Color: Glacier
Finish: NV







WESTERN, TN

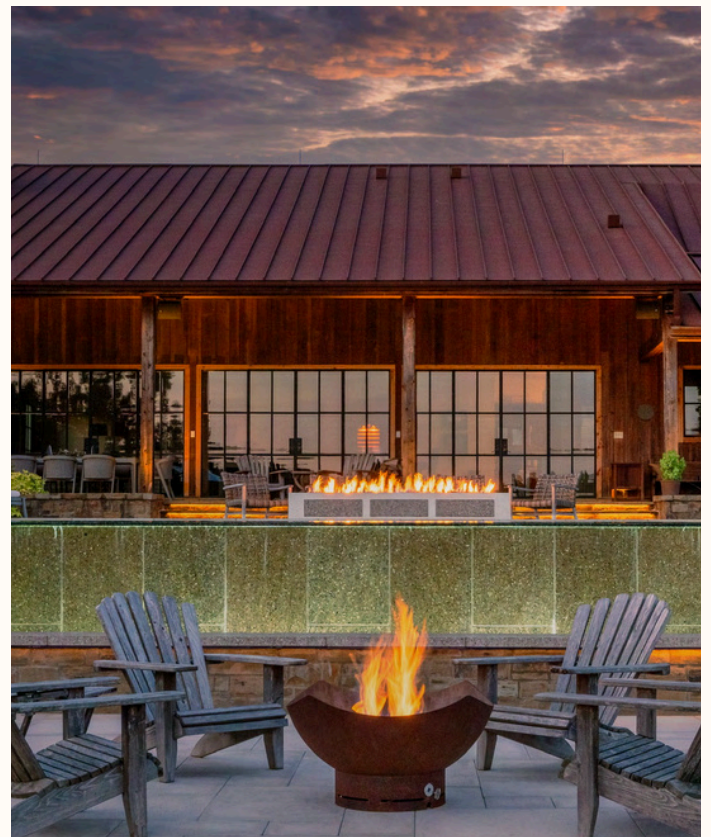
Vals Stone custom slab steps with custom light niche

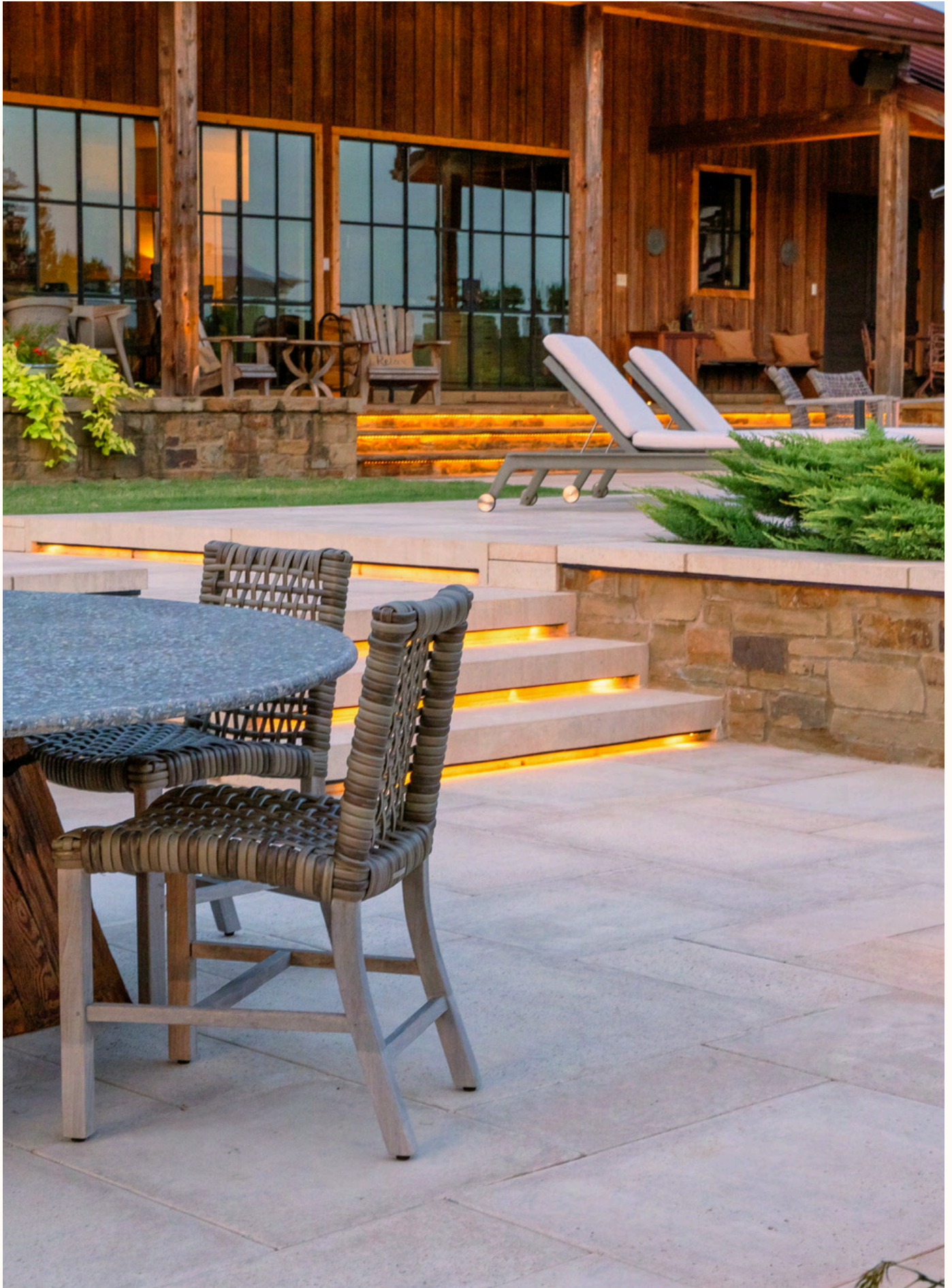
Vals Stone custom pool coping and spill way walls in Pecan with a TZ finish

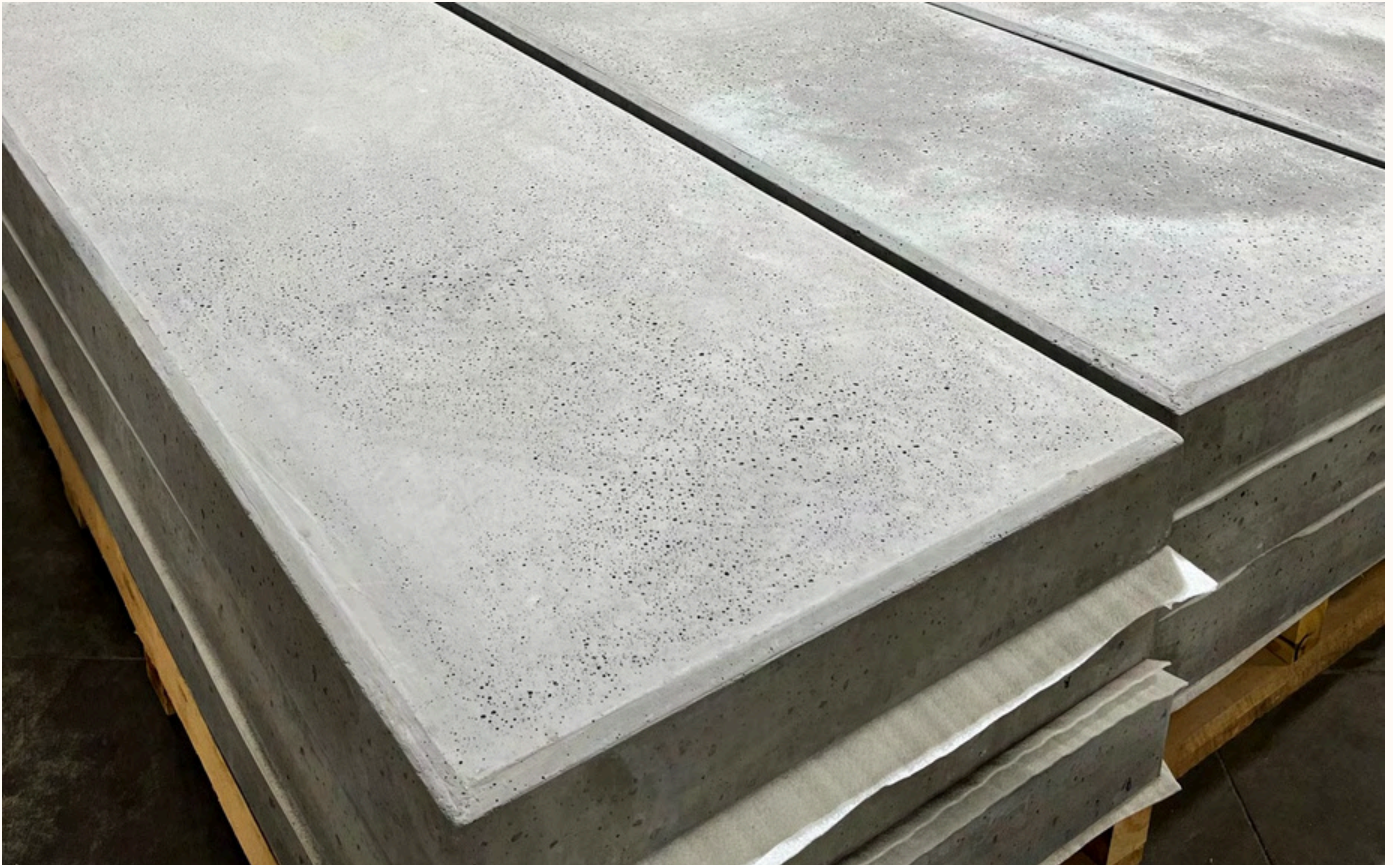
Vals Stone pool terrace: Standard 5 piece random pattern

Elements: BELLINZONA 84 inch round dining table lower deck and BERN rectangle fire feature upper deck with TZ inserts

Color: Wheat
Finish: NV





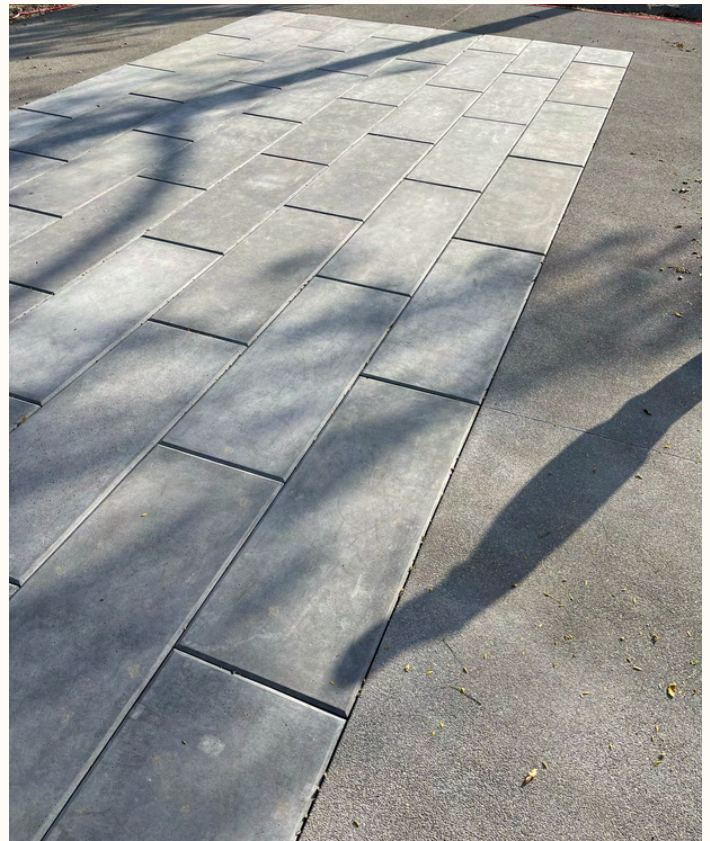


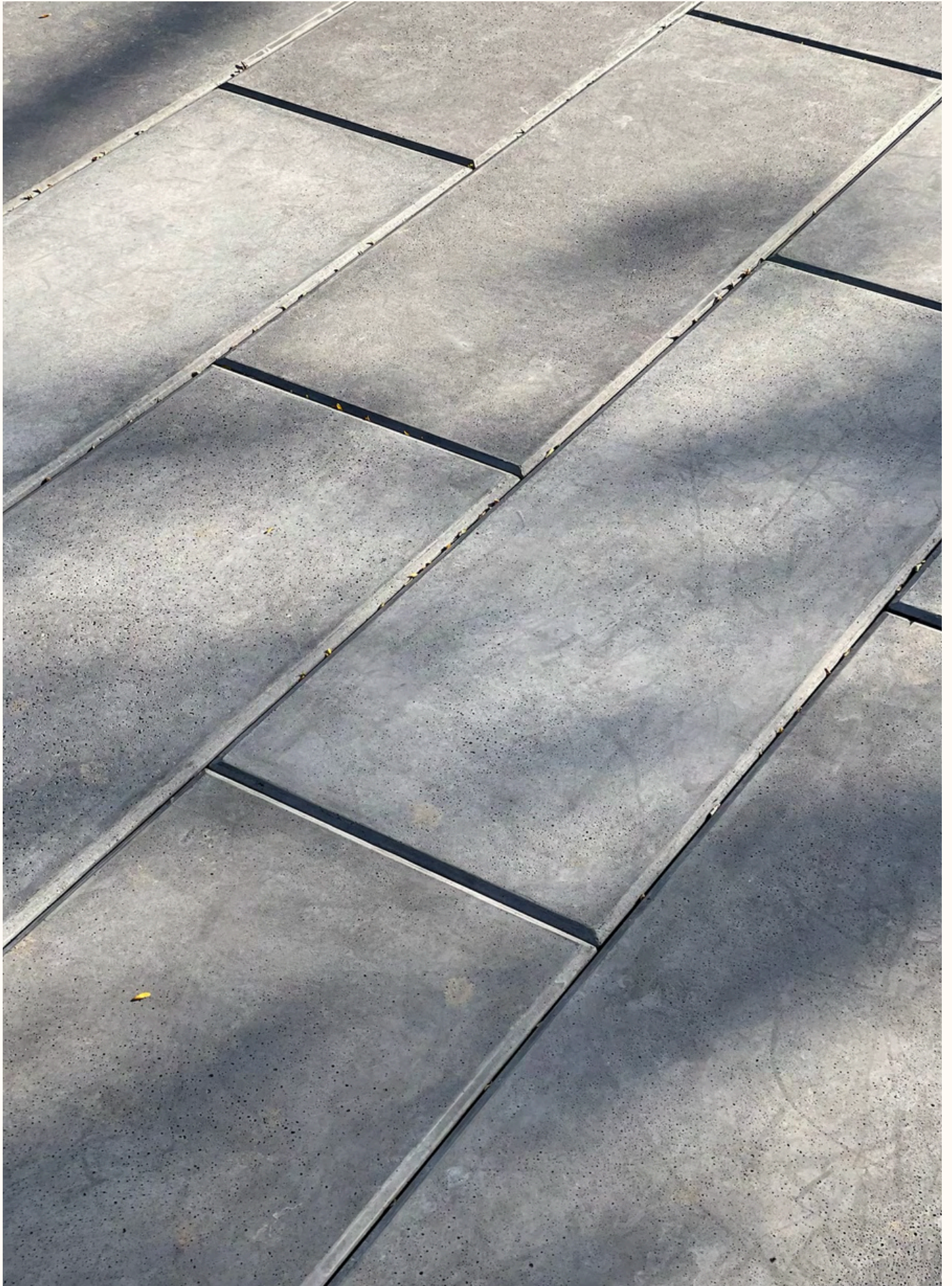
OAKWOOD, OH

Vals Stone custom large format vehicular drive pavers 96" x 36" x 6" thick

Color: Onyx
Finish: NV

Drive pavers are fabricated at a 6in thick minimum







EAST COAST

Vals Stone custom steps and
pool coping with porcelain
deck

Color: Pure White
Finish: Smooth

Vals Stone custom garden
edge restraints

Color: Pure White
Finish: Smooth







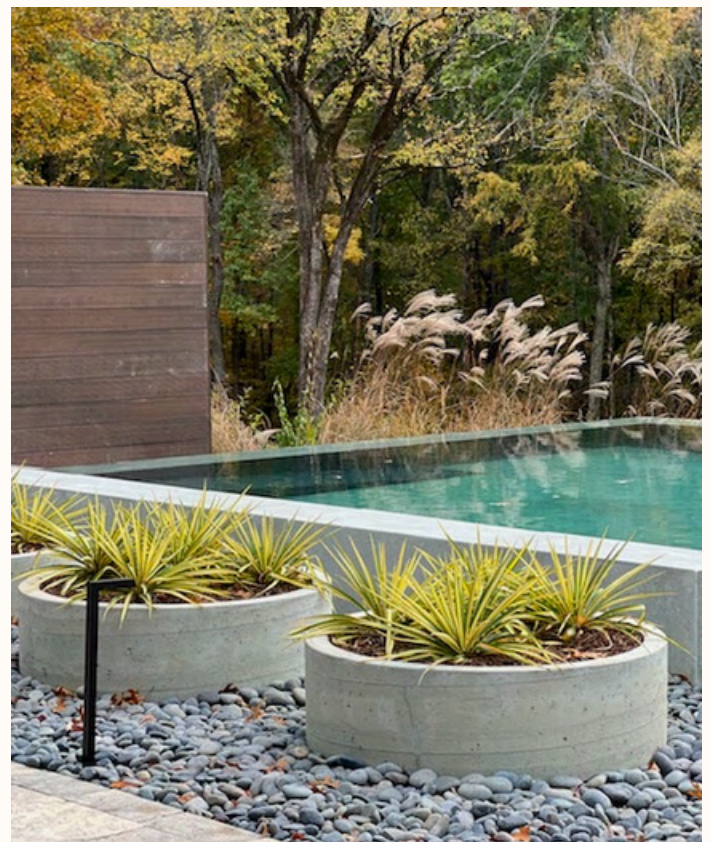
FRANKLIN, TN

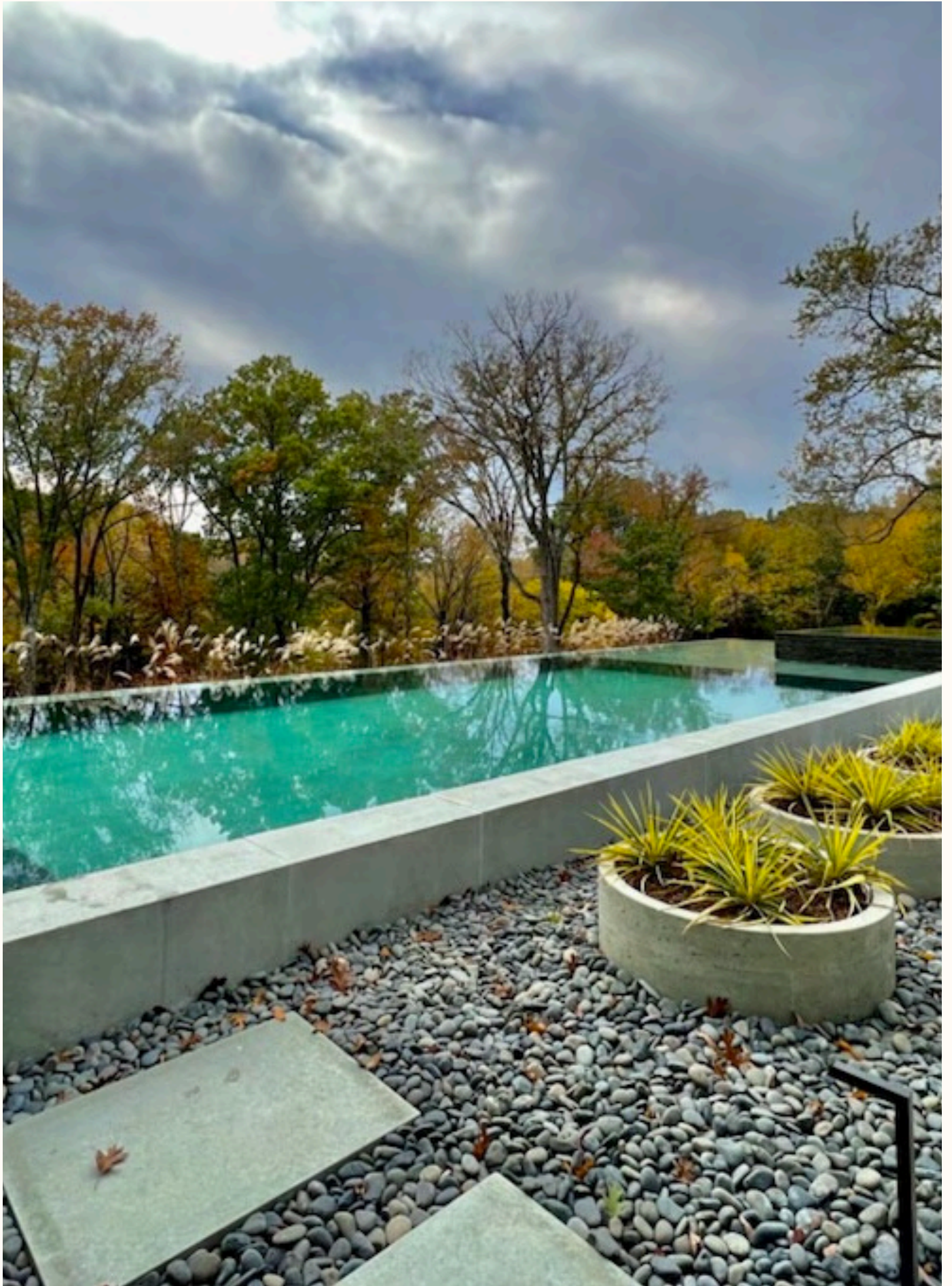
Vals Stone custom 18" turndown coping
2" thick

Vals Stone 18" x 36" NV pavers are used
to enhance the pool flooring

Elements included in this hardscape are
the Eze planters 42" diameter x 12" tall in
NV finish

Color: Kiawah Green



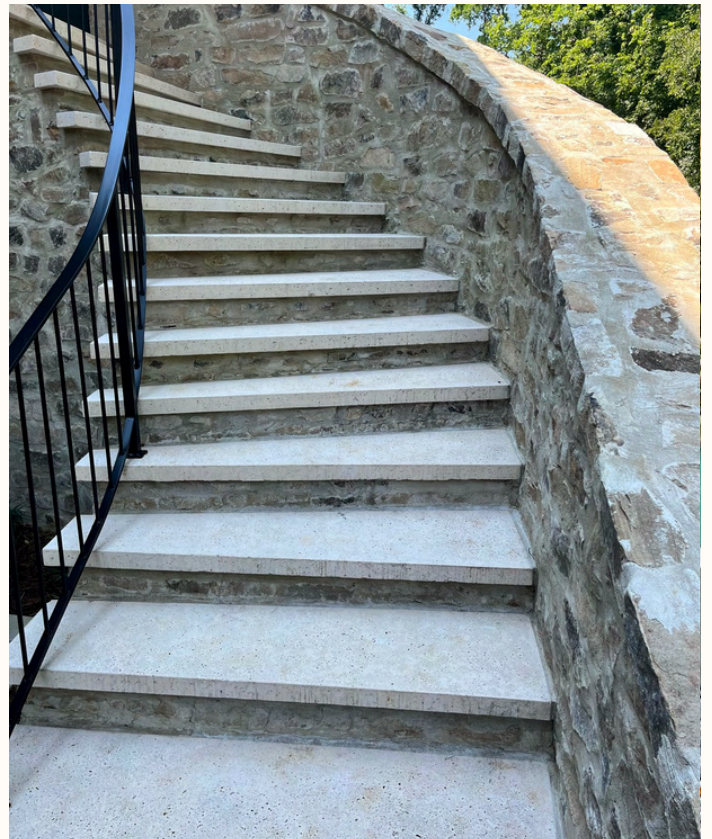




BELLE MEADE, TN

Custom Vals Stone 36" x 24" x 2 1/4"
thick pavers and various sized step treads

Color: Wheat
Finish: NV





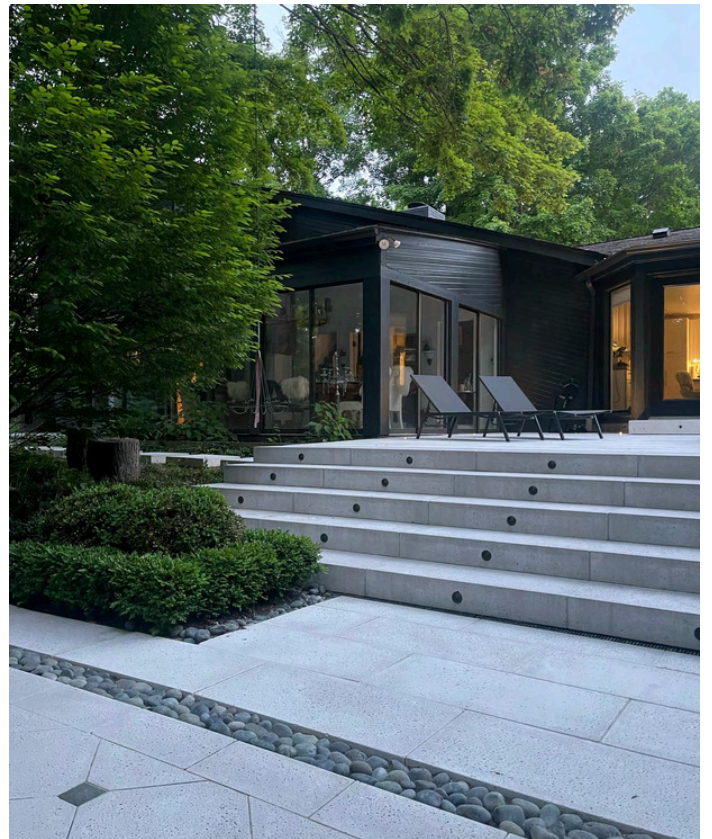


CENTERVILLE, OH

Vals Stone pavers with bluestone accents

Element: Lavaux lounge rectangle

Color: Glacier
Finish: NV





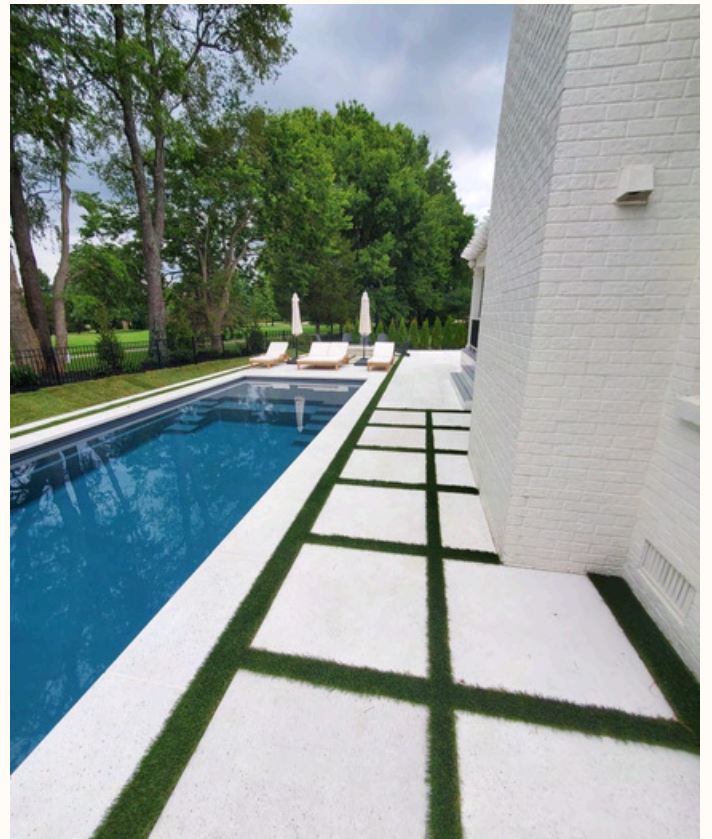
Vals Stone pavers 18" x 36"
Color: Glacier Finish: NV

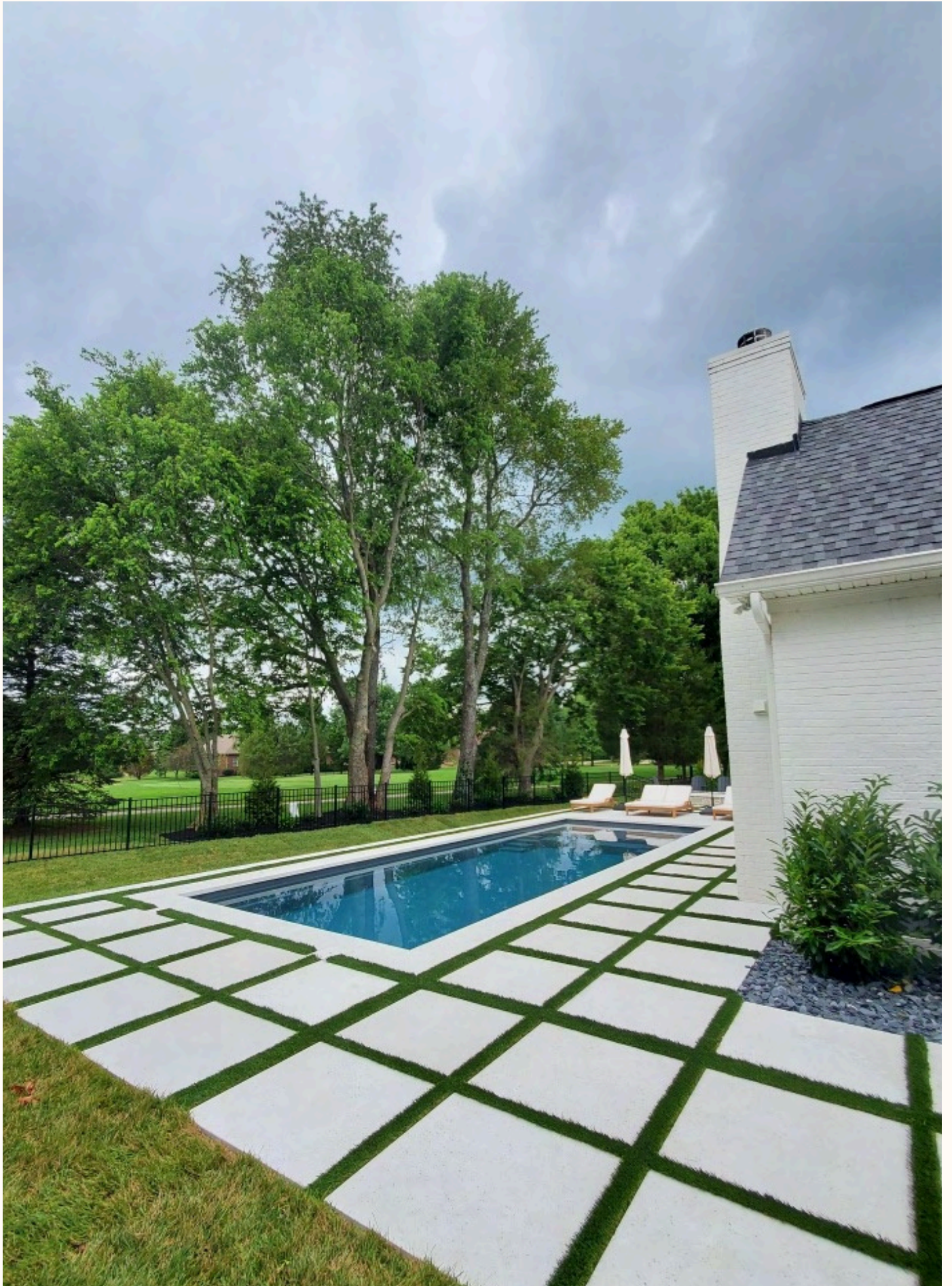


LOUISVILLE, KY

Vals Stone pool terrace, coping and
steppers

Color: Pure White
Finish: NV







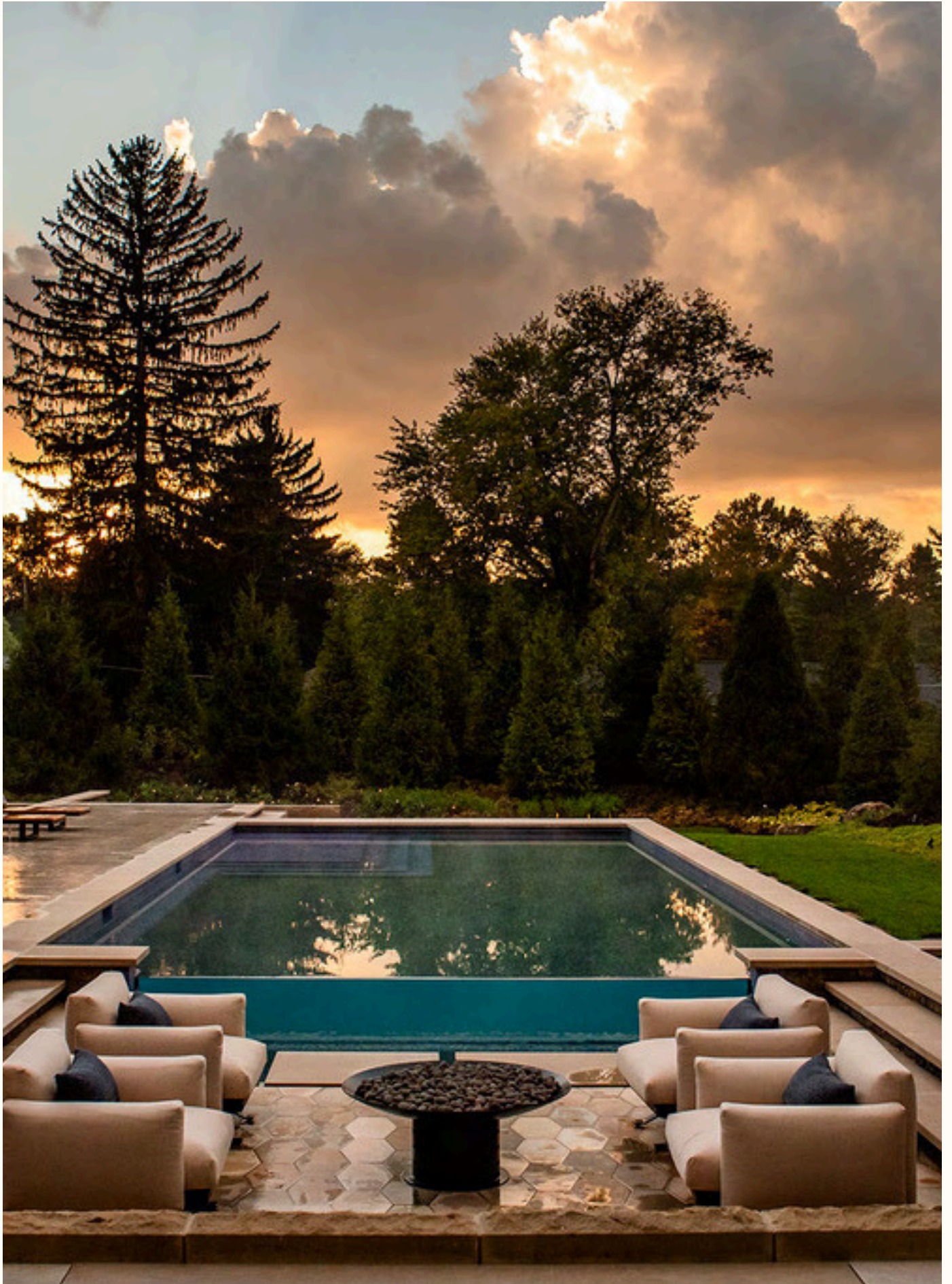
INDIANAPOLIS, IN

Hexagon paver pattern, randomly patterned in 3 colors: Vals Pecan, Wheat + Alps white

Vals Stone pool terrace and coping

Color: Random Pecan, Wheat and Alps white
Texture: NV



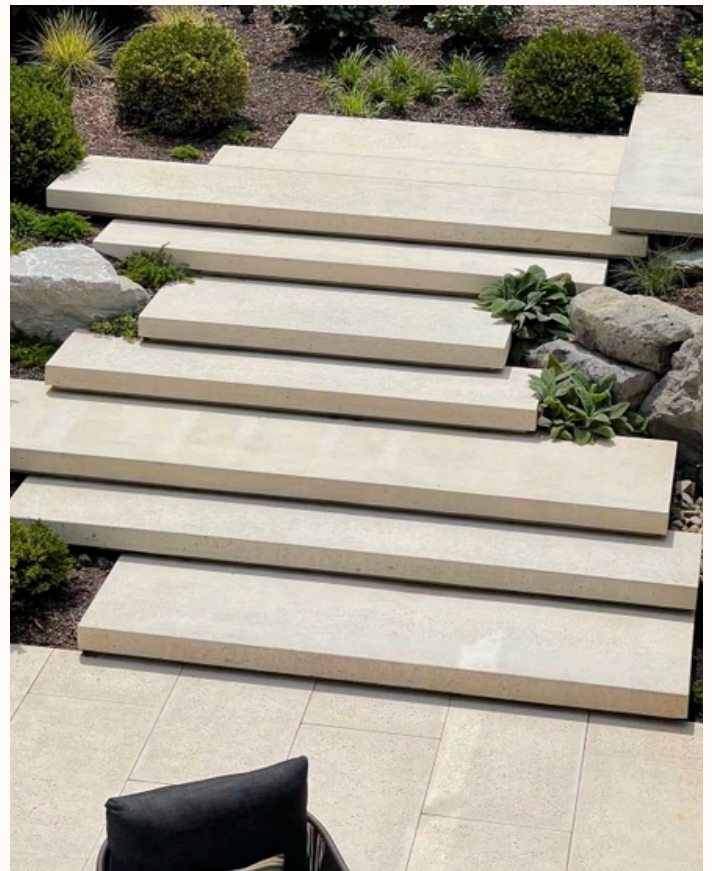




OAKWOOD, OH

Vals Stone custom floating steps with light niche and 24" x 48" x 2 1/2" Vals Stone pavers

Color: Wheat
Finish: NV







NV, TZ, Smooth

12"x12", 12"x24", 24"x24", 24"x36", 36"x36" x 1 5/8",
18"x64", 24" x 48" standard - 2 1/2" thick

(All pavers are formed for 1/4" +/- joints
So for example the 12"x12" is fabricated 11 7/8" x 11 7/8" for the installation of sand or mortar joints)
Any custom pavers can be made in these finishes
(special framing/pouring/finishing charges will be applied.)

Thermal Finish

12"x12", 12"x24", 24"x24", 24"x36", 36"x36" standard -
1 5/8" thick

36"x14" x 2 1/4" thick (Thermal texture on 5 sides)

24"x24" x 2 1/4" thick (Thermal texture on 5 sides)

18"x36" x 3" thick (Thermal texture on 5 sides)

48"x48" x 2 1/2" thick (Thermal texture on 5 sides -
Full dimension)

Weights

1 5/8" thick pavers are 20.38 lbs per sf

2" thick pavers are 25 lbs per sf

2 1/4" thick pavers are 28.13 lbs per sf

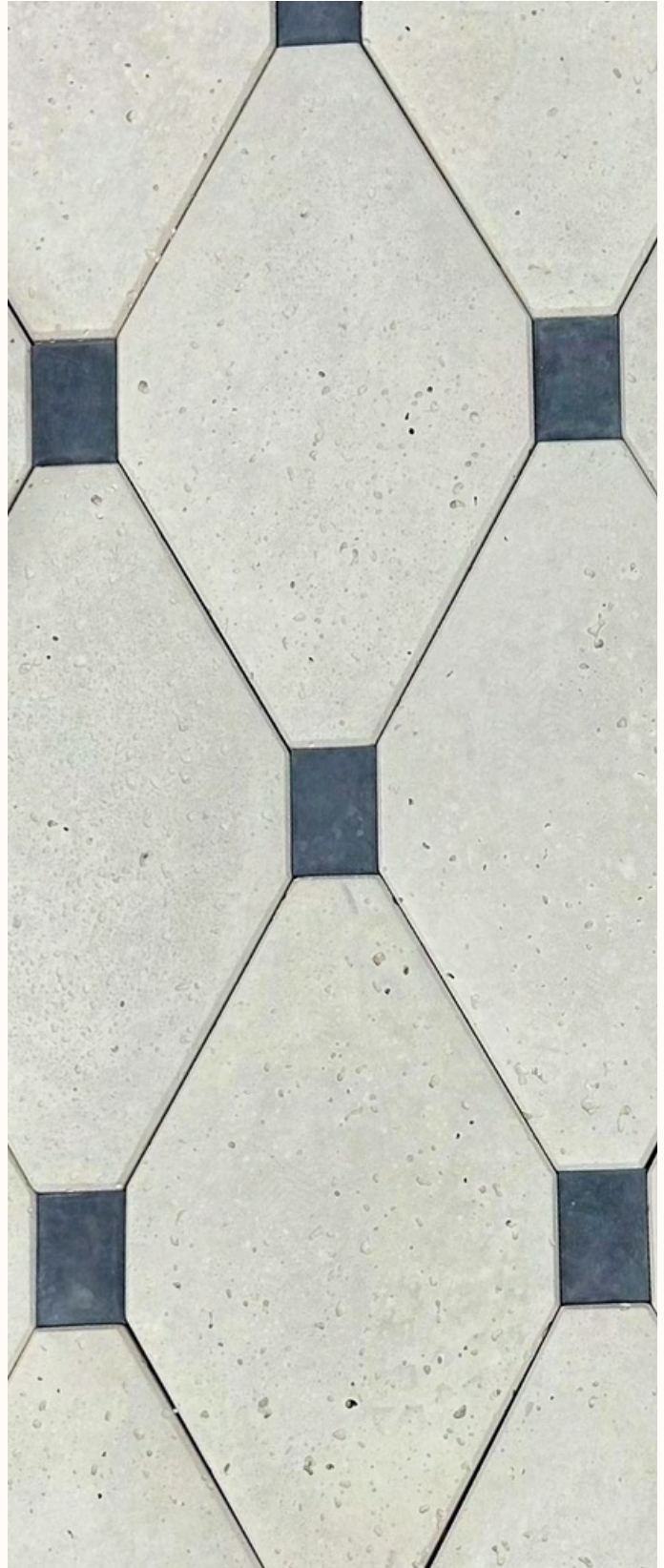
2 1/2" thick pavers are 31.25 lbs per sf

3" thick pavers are 37.50 lbs per sf

4" thick pavers are 50 lbs per sf

5" thick pavers are 62.50 lbs per sf

6" thick pavers are 75 lbs per sf (Vehicular Traffic)



ARGYLE PATTERN

Argyle: 17 1/2" x 10" x 1 5/8"

Inserts: 2" x 3" x 1 5/8"



NV, TZ, Smooth

Straight face eased edge coping/treads

2", 2 1/4", 2 1/2", 3", 4", 5" and 6" thick

Widths of 12, 14, 16" wide x 36-48" long are the standard lengths.

Radius copings/treads can be made in these finishes, with proper shop drawings and/or hard templates. Any custom copings/treads can be made in these finishes (**special framing/pouring/finishing charges will be applied.**)

NV and Smooth Finish

Bullnosed coping

2 1/4" thick

48"x18"

48"x48" corner coping 18" wide coping to match straight

We also have 19" x 60" x 2"

Radius copings/treads can NOT be made with this edge detail.

Thermal Finish

Straight Edge Thermal Finished

36"x14"x 2 1/4" thick (Thermal texture on 5 sides)

24"x24"x 2 1/4" thick (Thermal texture on 5 sides)

18"x36"x 3" thick (Thermal texture on 5 sides)

48"x48"x 2 1/2" thick (Thermal texture on 5 sides, Full Dimension)

Radius copings/treads can NOT be made in this finish.

Call regarding Thermal finished sizes, as we are always adding molds based on customer requests

Weights

2" thick copings/treads are 25 lbs per sf

2 1/4" thick copings/treads are 28.13 lbs per sf

2 1/2" thick copings/treads are 31.25 lbs per sf

3" thick copings/treads are 37.50 lbs per sf

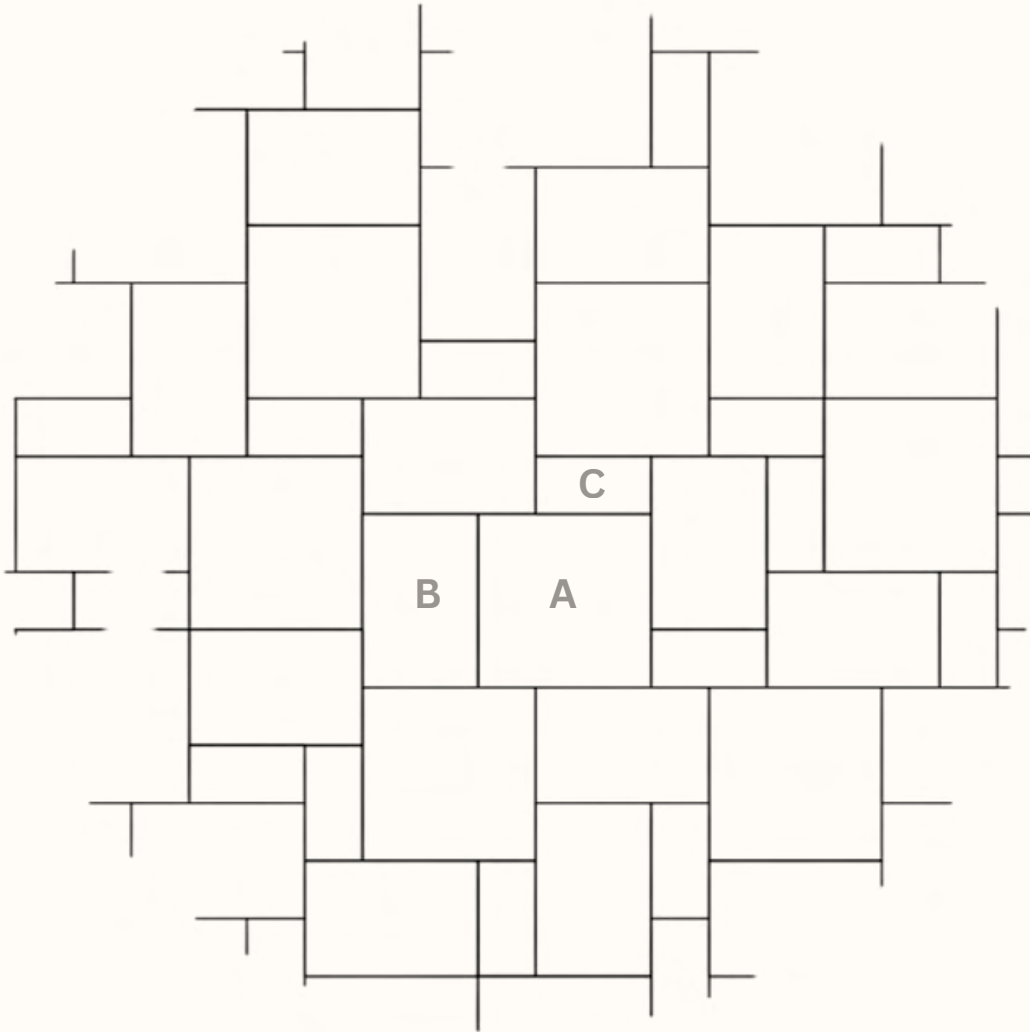
4" thick copings/treads are 50 lbs per sf

5" thick copings/treads are 62.50 lbs per sf

6" thick copings/treads are 75 lbs per sf



PATTERN 3 PIECE RANDOM



ALL SIZES NOMINAL (# PER 100 SF)

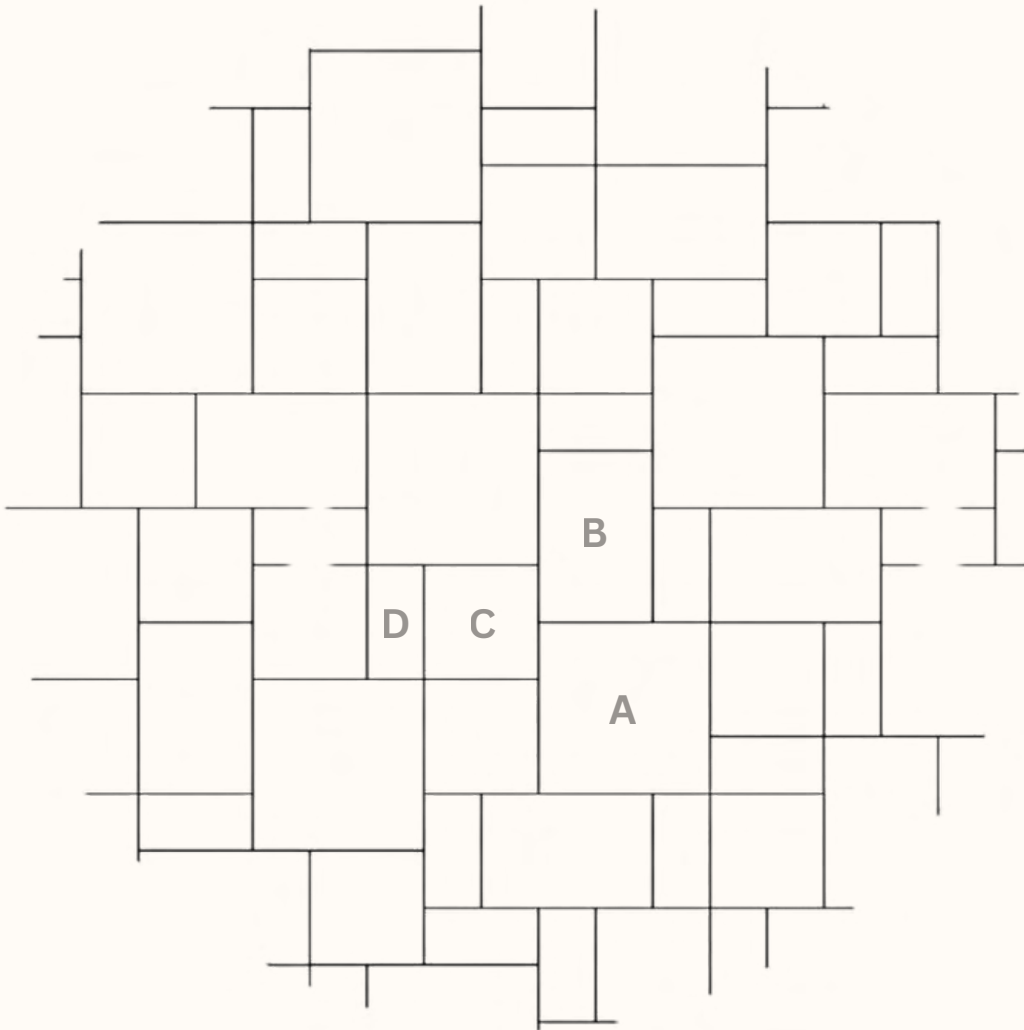
A - 36x36 (4.77)

B - 24x36 (7.16)

C - 12x24 (7)



PATTERN 4 PIECE RANDOM



ALL SIZES NOMINAL (# PER 100 SF)

A - 36x36 (3.3)

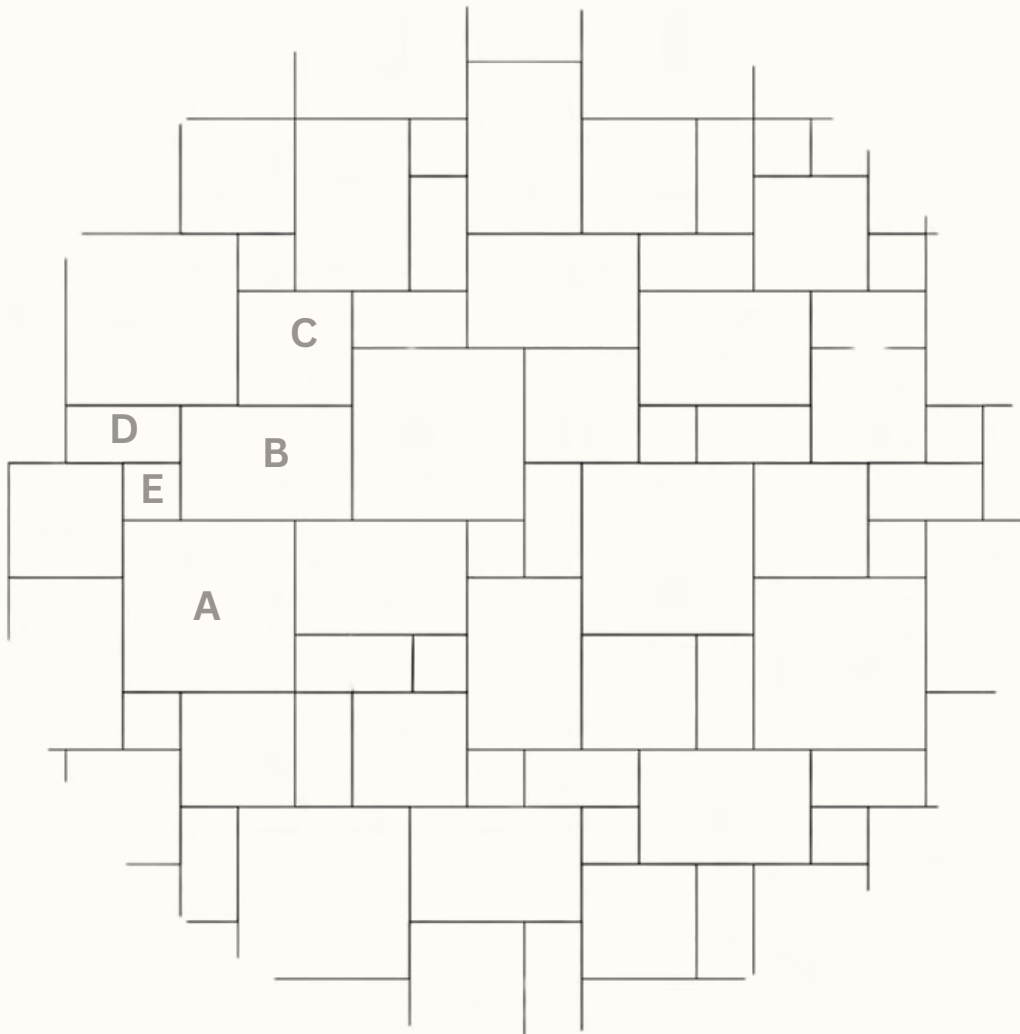
B - 24x36 (4.67)

C - 24x24 (6)

D - 12x24 (9)



PATTERN 5 PIECE RANDOM

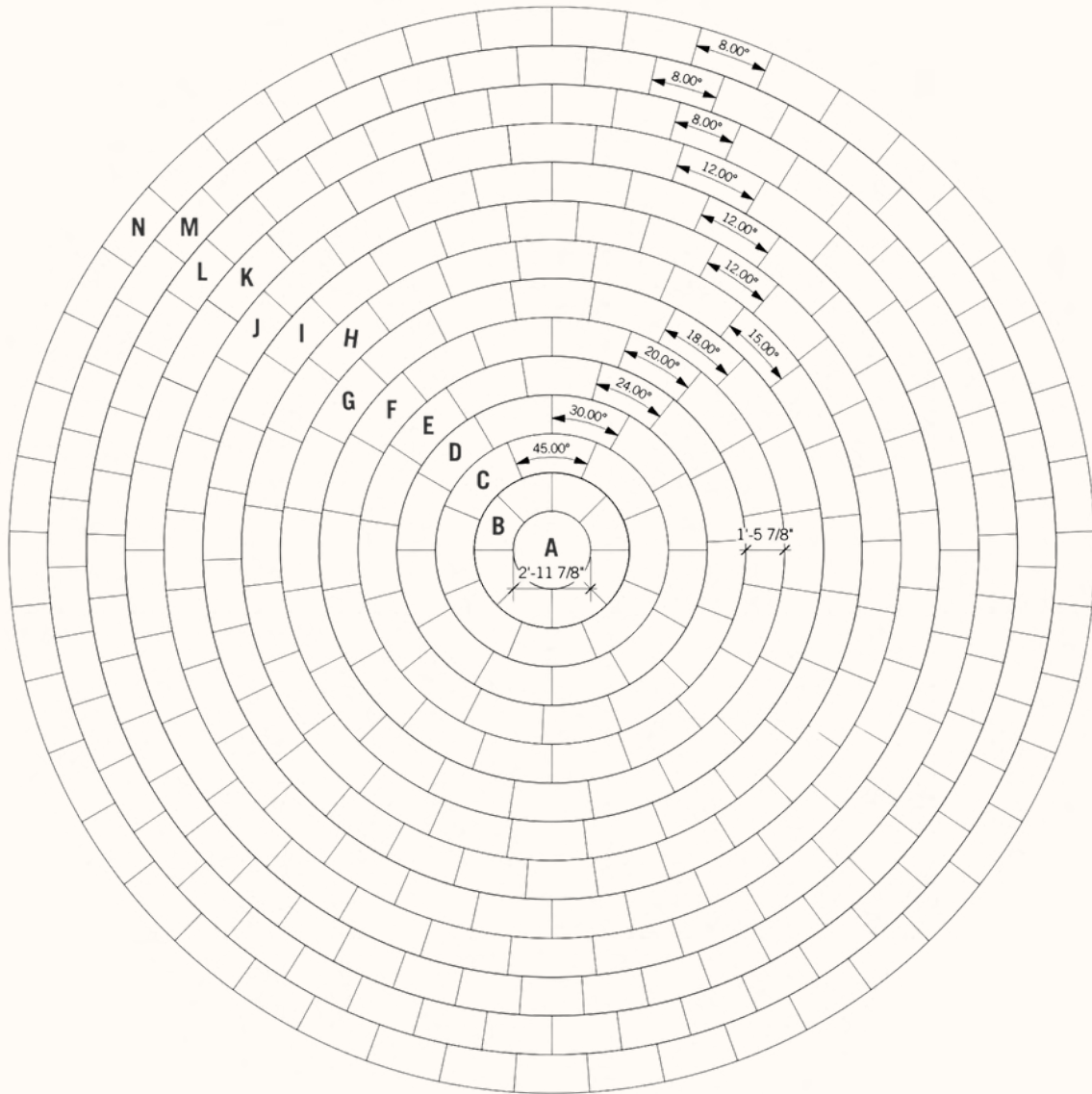


ALL SIZES NOMINAL (# PER 100 SF)

- A - 36x36 (3.3)
- B - 24x36 (4.83)
- C - 24x24 (5)
- D - 12x24 (7.5)
- E - 12x12 (6)

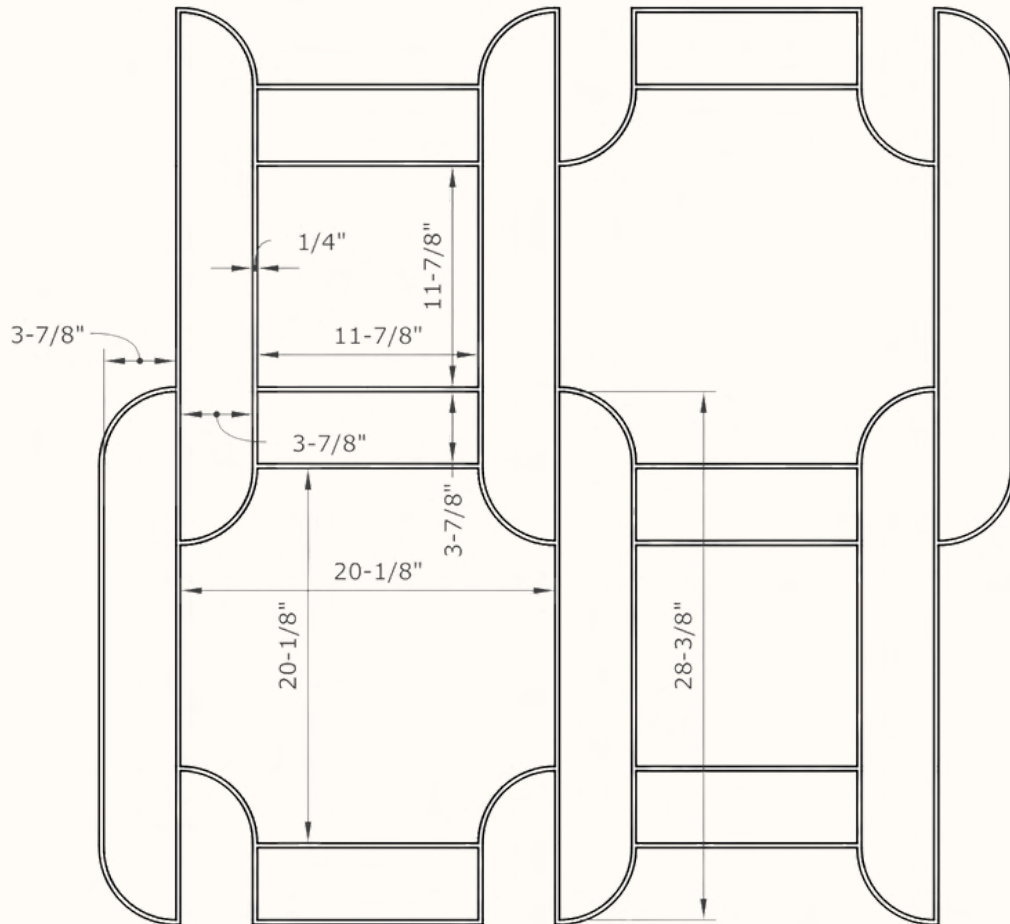


PAVER CIRCLE KIT CONCEPT



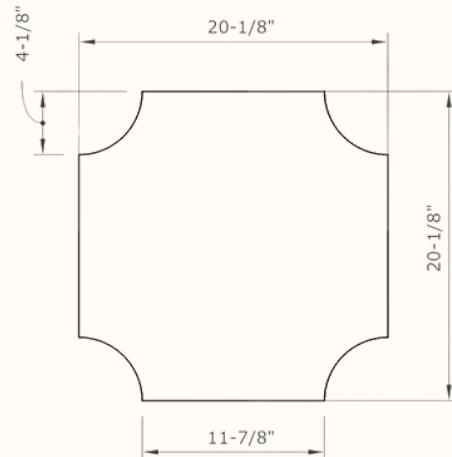
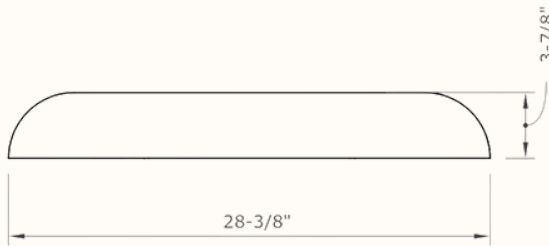
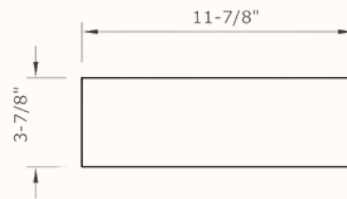
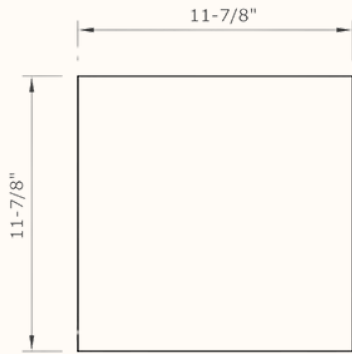


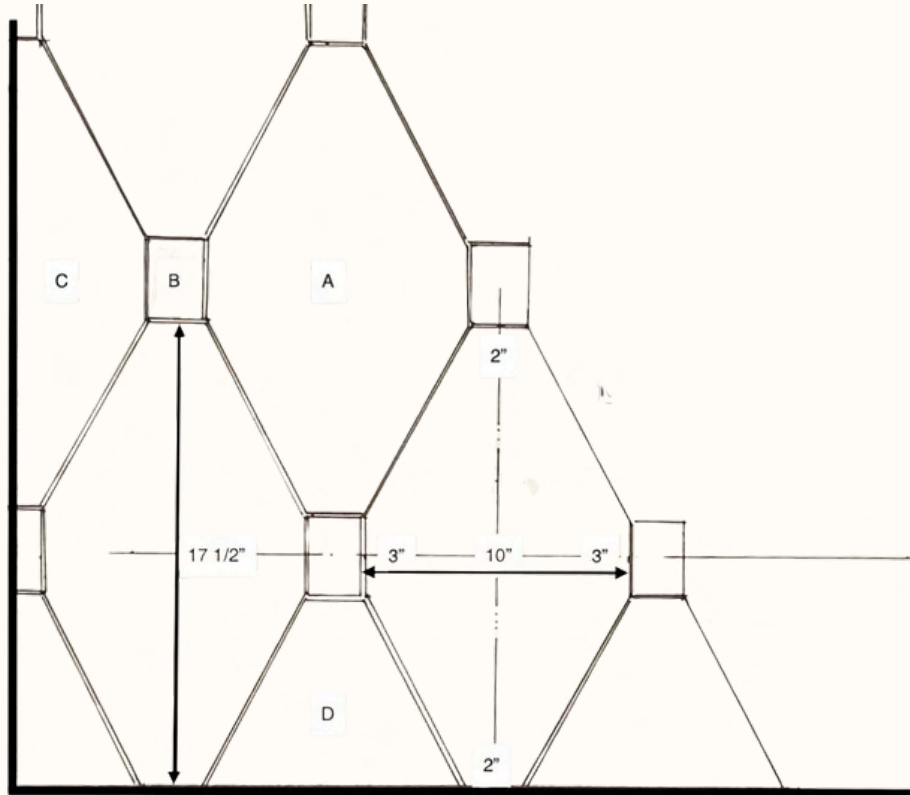
ASCONA COLLECTION/ROME PATTERN





**THIS COLLECTION IS PILLOWED, TO CREATE MORE DETAIL AND INTEREST.
PERFECT FOR INLAYS OR STOOPS.**





PATTERN UNITS

A- WHOLE

17 1/2" X 10" X 1 5/8" THICK

B- INSERT

2" X 3" X 1 5/8" THICK

C- LONG HALF

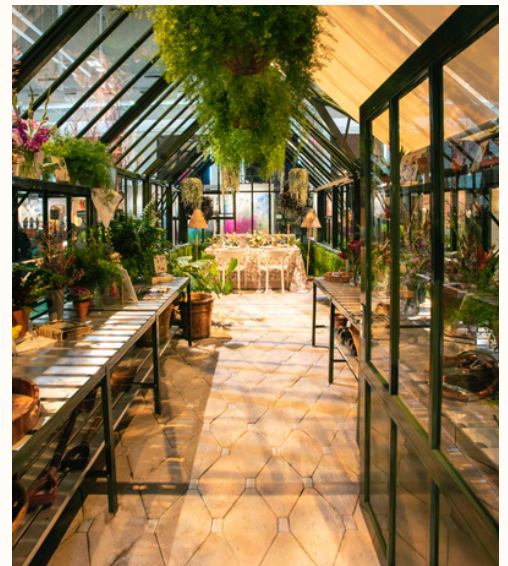
17 1/2" X 5" X 1 5/8" THICK

D- SHORT HALF

8 3/4" X 10" 1 5/8" THICK

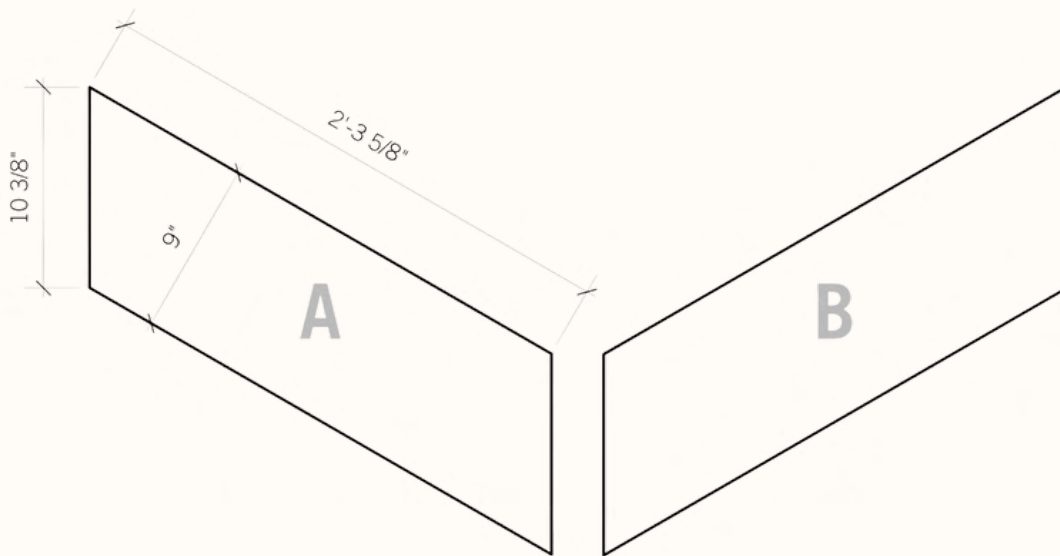
ALL UNITS ARE PILLOWED FOR EXTRA DETAIL

NV FINISH





CHEVRON PAVER PATTERN

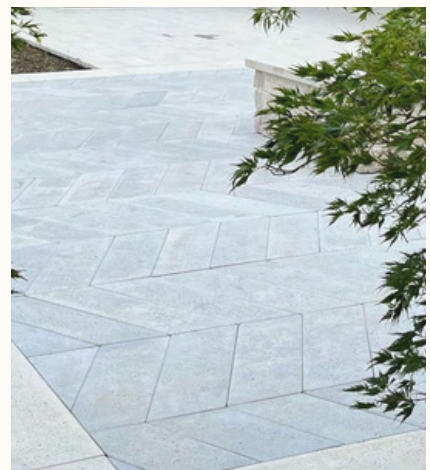


CHEVRON PAVER PATTERN

A - 10 3/8" x 2' - 3 5/8" x 9"

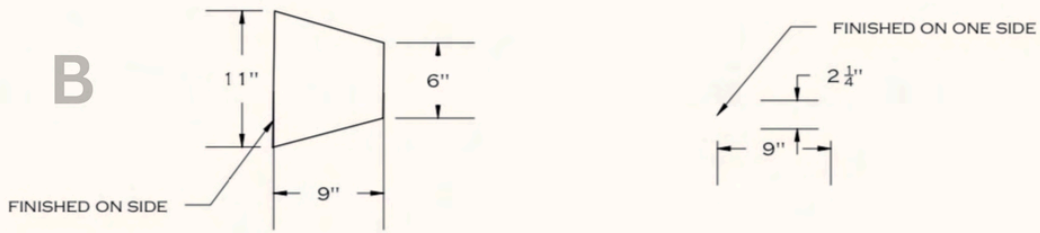
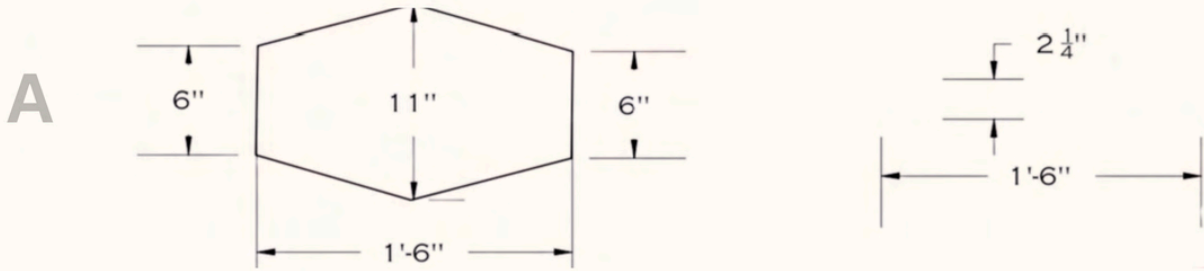
B - 10 3/8" x 2' - 3 5/8" x 9"

EXAMPLE:

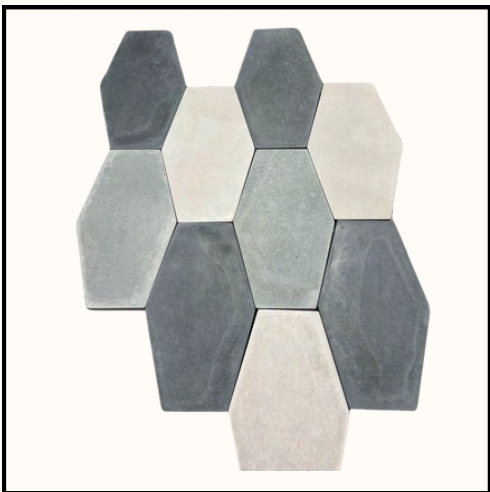
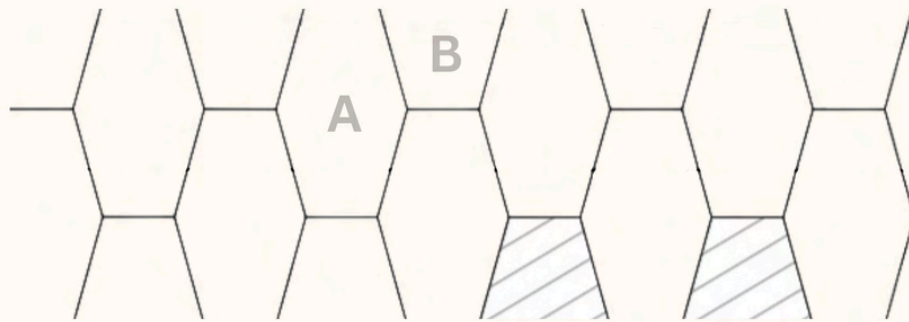


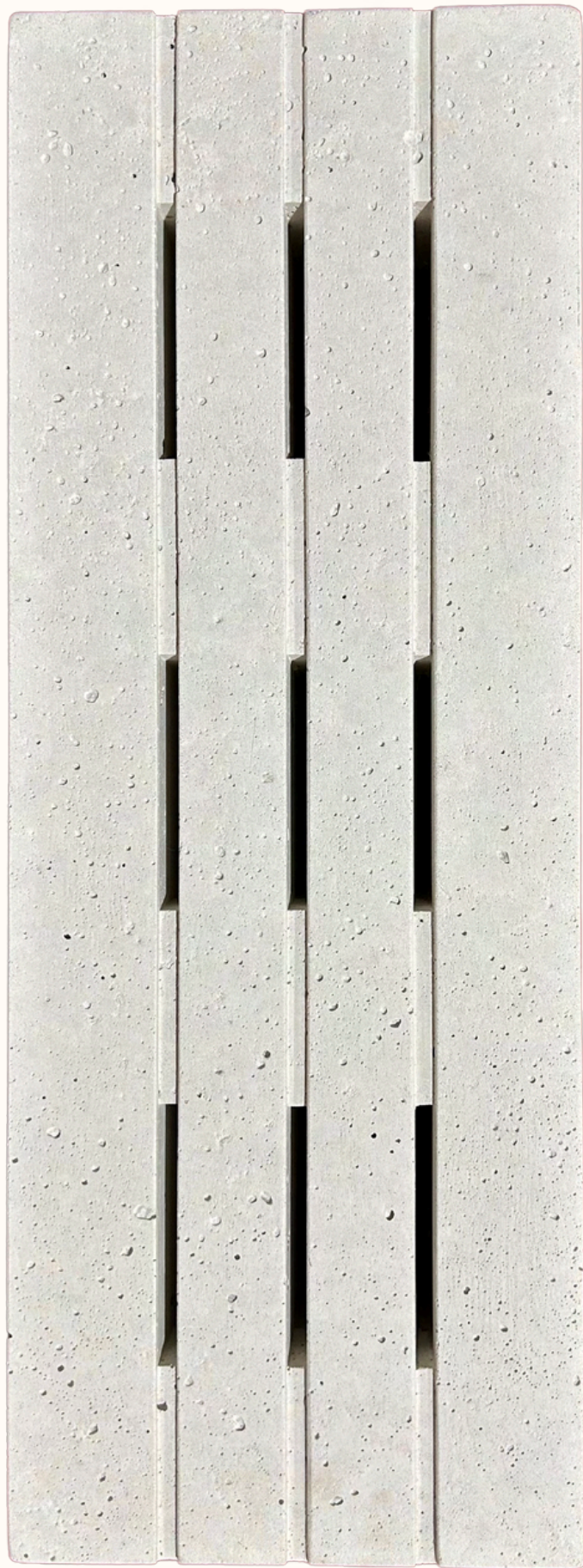


HEXAGON PAVER PATTERN



(C) QUANTITIES:
NV FINISH / CUSTOM COLOR A: 1 1





Vals Stone drain cover
Color: Pure White

24in x 9in x 2 1/2in



Vals Stone is designed to seamlessly harmonize with its natural surroundings, creating an effortless integration between architecture and environment. Each shade within our premium and traditional color lines is influenced by nature's awe-inspiring landscapes and raw beauty.

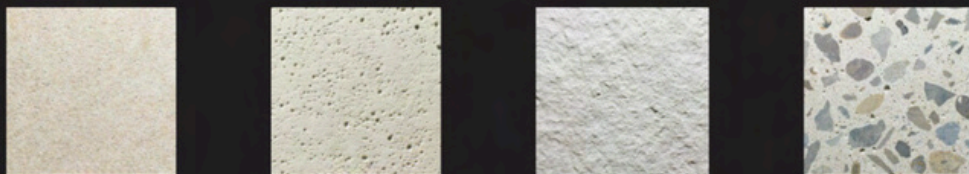
TRADITIONAL VALS STONE COLORS



PREMIUM VALS STONE COLORS



VALS STONE FINISHES



Smooth

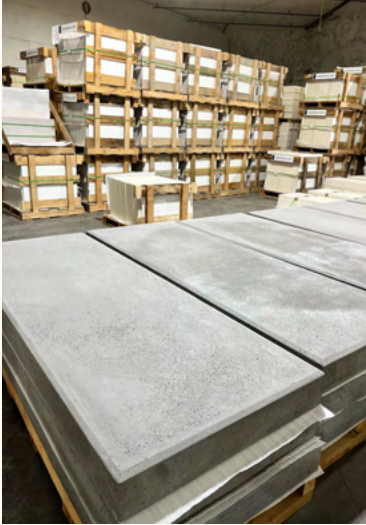
NV

Thermal

Terrazzo



Vals Stone furnishings and tiles are comprised of the finest aggregates, white sand and white cement to increase its solar reflectivity.



PERFORMANCE TESTING

Absorption (ASTM C140): Not more than 4%.

Compressive Strength (ASTM C140): Not less than 10000 psi

Freeze Thaw Resistance (ASTM 1260): Less than 1 % loss of dry weight after 50 cycles.

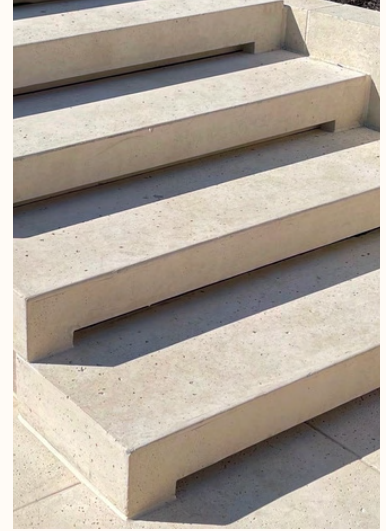
Solar Reflectivity (SRI) (ASTM 1549) .75

Slip Resistance Coefficient of Friction (ASTM C1195): 0.89



DELIVERY & HANDLING

When pallets are delivered to the site, keep covered with a tarp, plastic, or house wrap to keep debris, acid rain, and other natural elements from streaking the stone while it is palletized. Do not stack pallets onsite. Refrain from crisscross stacking the pavers, as this will keep them from curing evenly. When installing the stone, keep excess soil debris, foot traffic, and other construction debris off the newly installed product until it is properly cleaned and sealed. We recommend construction fencing around the newly installed areas.

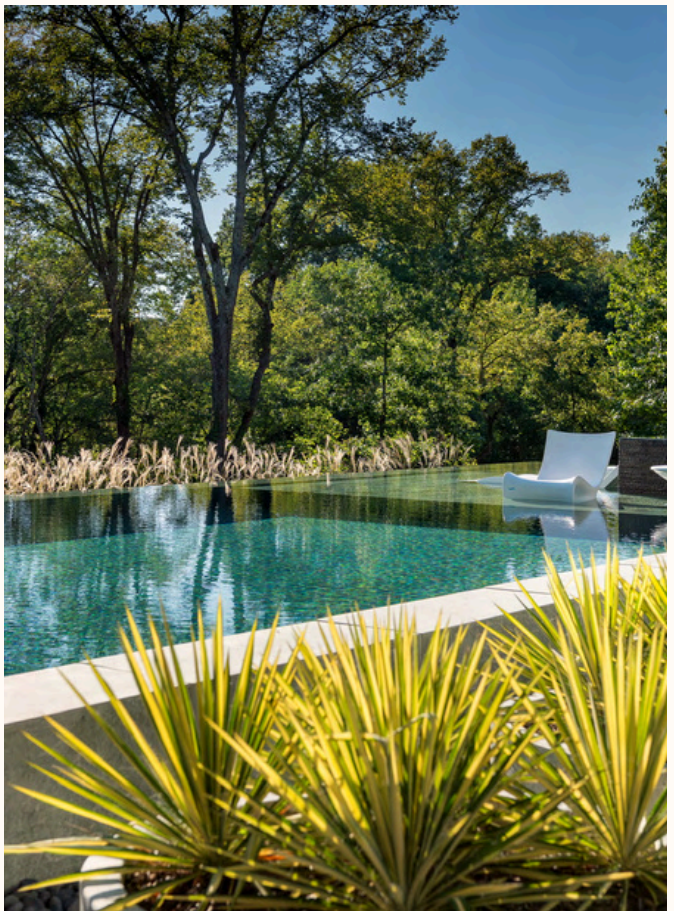


LIFETIME WARRANTY

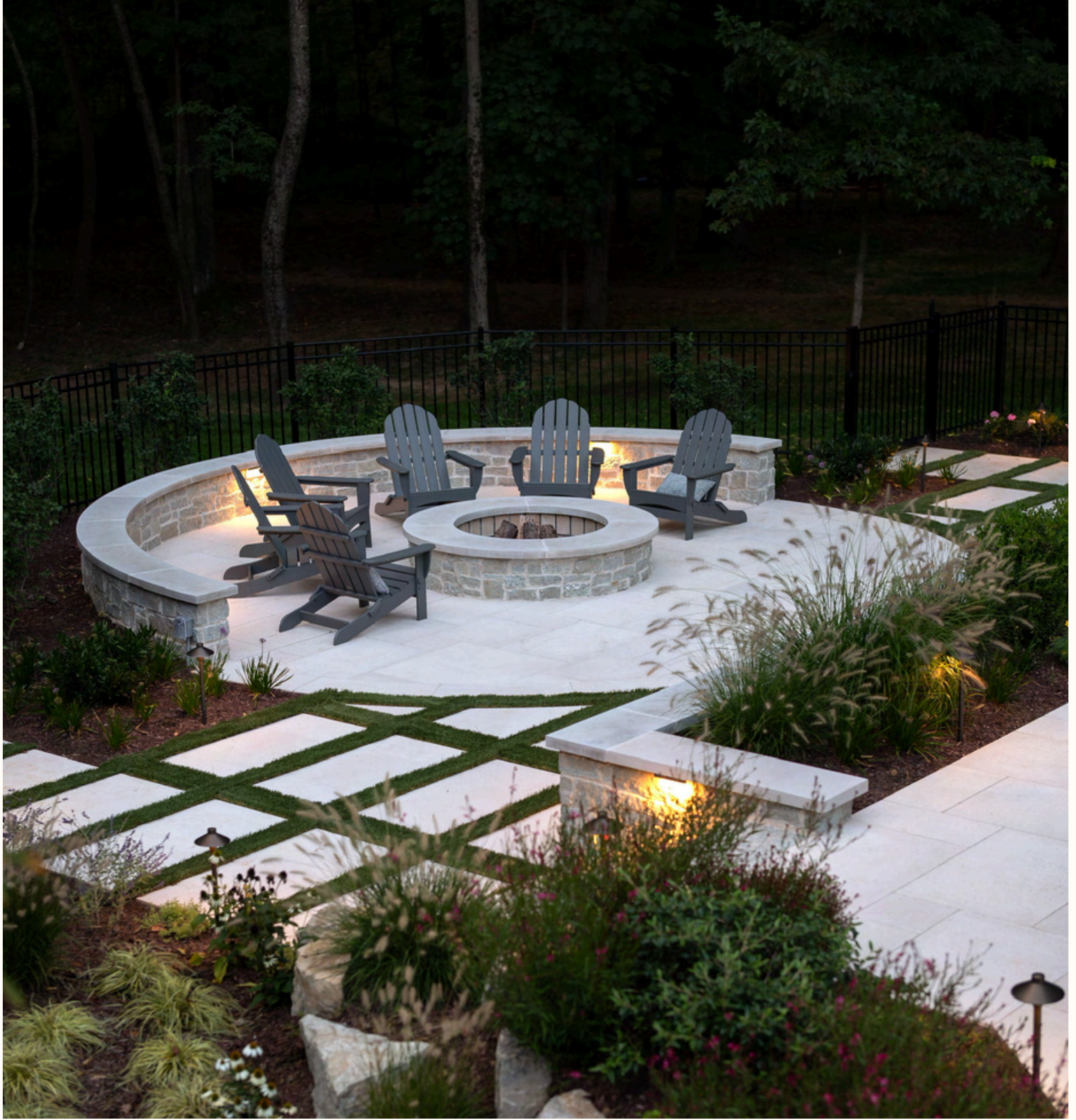
Atelier Vals provides a Lifetime warranty covering our Vals Stone products and custom elements for full replacement at no cost for any unforeseen manufacturing defects. The Purchaser must register for the Lifetime warranty at the time of purchase to activate the warranty. To provide this warranty, it is imperative that the Vals Stone be protected from receipt of material to installation and care thereafter. Atelier Vals will not cover stains, chips, breaks or damage to our products based on improper installation practices. The Atelier Vals Lifetime warranty is valid for manufacturing defects after review of a warranty claim submitted by a registered purchaser.



GALLERY







ATELIER VALS

SWISS INSPIRED. KENTUCKY MADE.

@ATELIERVALS

ATELIERVALS.DESIGN